

Committee on the Carver Award

The Committee to select this year's Carver Medal winner has settled on William L Harkness, Professor Emeritus at Penn State University. After trying to reach him by telephone, I sent him the following e-mail. If I recall correctly, there should be a citation. I suggest:

For his years of distinguished service as Program Secretary and on various committees of the IMS.

David O. Siegmund  
Chair

# **Report on issues regarding the establishment of an IMS Asia and Pacific-Rim Meeting Sequence**

## **IMS ad hoc committee on Asia and Pacific-Rim Meetings**

### **Committee Members**

Ngai-Hang Chan (Hong Kong)  
Probal Chaudhuri (India)  
Rong Chen (US, China) – Chair  
Zehua Chen (Singapore)  
Ming-Yen Cheng (Taiwan)  
Nick Hengartner (IMS program secretary, ex officio)  
Byeong Park (Korea)  
Akimichi Takemura (Japan)  
Matt Wand (Australia)

### **Executive Summary**

The IMS *ad hoc* committee on Asia and Pacific-Rim meetings was charged by the IMS president to study the feasibility and forum for an IMS meeting series in Asia and Pacific-Rim. The main objective of such a meeting series is to establish and increase a more international presence of IMS and to increase IMS membership, particularly in under represented and growing areas. It is the finding of this committee that such a meeting series in Asia and Pacific-Rim is indeed necessary, timely and feasible. The statistical research communities in Asia and Pacific-Rim have been growing with the economic growth in the region. The regional statistical societies in the area have been active, but with limited collaborations across different countries and regions. The statistical researchers in this area have become increasingly productive in statistical research, applications and education and have produced significant number of outstanding students. However, the presence of IMS, as a leading international society for statisticians, is rather limited. IMS membership in the area has not grown at the same rate as the local statistical communities. This committee believes that an IMS Asia and Pacific-Rim meeting series would be extremely beneficial in several fronts, including but not limited to: (1) providing an excellent forum for scientific communications and collaborations among the researchers within the area and with researchers from other parts of the world; (2) significantly increasing the presence, leadership and services of IMS as an international society; (3) promoting and attracting next generation of statistical researchers in the area; and (4) significantly increasing IMS membership in this area.

The committee also found that it is indeed feasible to establish such a meeting series and there are significant local interests to host such meetings. The meeting series may demand certain financial support from IMS initially, but it is highly likely that the meetings can attract sufficient local resources to cover most of the meeting expenses. The committee strongly endorses the establishment of an IMS meeting series in Asia and Pacific-Rim.

## **1. Introduction**

With the increasing importance of statistical theory, methods and applications in the modern society and the recent tremendous economic growth in Asia and Pacific-Rim area, the statistical research communities in the area have been growing significantly. The regional statistical societies in the area have been active in promoting statistical research and disseminating and enhancing communication and collaboration of their members. The statistical researchers in this area have become increasingly productive in statistical research, application and education and have produced significant number of outstanding students. However, the collaborations between the societies across countries and regions in this area are quite limited. It also has limited access to international conferences and workshops due to its geographical location.

Comparing to the growth of statisticians and statistical activities in the area, IMS's presence in this area has not been growing at the same pace. While IMS journals have been publishing more papers authored by the researchers in this area, IMS membership from this area has not seen major growth. In some cases, IMS is still being viewed as a theoretical society located in the U.S. The lack of strong presence of IMS in the area has been noticed by many researchers both in and outside the area.

## **2. Rationales for an IMS Meeting Series in Asia and Pacific-Rim.**

In the age of globalization, IMS, as the leading international society for statisticians, has the responsibility to make a genuine effort to become truly global and significantly increase its presence in the Asia and Pacific-Rim area. The committee found that an IMS meeting series in the area can be an important step to achieve such an objective.

- (1) An IMS meeting series will provide an excellent forum for scientific communications and collaborations for the researchers within the area. It will also promote communications and collaborations between the researchers in this area and those from other parts of the world. Overall it would benefit and promote statistical research in general and benefit IMS members both in and outside the area in particular.

- (2) An IMS meeting series will significantly increase the presence of IMS as an international society for statistical researchers and increase its leadership and service to its members globally.
- (3) The area has been traditionally very strong in producing a large number of high quality undergraduate students in mathematics and statistics. A strong presence of IMS in the area will attract those students to continue their education and career in statistics locally or abroad, hence promote and maintain strong workforce in statistics and future memberships of IMS.
- (4) With carefully planning and some ingenuity, an IMS meeting series will significantly increase IMS membership.

### **3. Feasibility**

With numerous informal discussions with statistical researchers in the area, we found that it is highly feasible to establish such a meeting series.

- (1) It will attract a significant number of participants from within and outside the area, hence ensure high quality in terms of scientific content. The local researchers are increasingly productive, doing innovative statistical research and interesting and important real applications. The area will also attract leading scientists from outside the area to the meeting, to communicate and gain international experiences.
- (2) We have noticed significant and enthusiastic local interests to host such meetings in various countries and regions in the area. There is indeed a high demand of high quality general topic international conferences on a regular basis.
- (3) The meeting series may demand certain financial support from IMS initially. But with the prominent status of IMS and the potential high quality of the meetings, it is highly likely that the meetings can attract sufficient local resources to cover most of the meeting expenses, if not all.

### **4. Recommended Organizational and Logistic Details:**

- (1) **Name:** We recommend the name of the meeting series as ‘IMS Asia and Pacific-Rim Meetings (IMS-APRM)’. It covers all countries and regions in Asia and Pacific-Rim.
- (2) **Frequency of the Meeting:** We recommend once every two years initially. If it is shown to be successful, of high demand and without heavy financial dependence from IMS, it can be done once a year.

**(3) Organizational Structure:**

- a. IMS should form a standing committee on the IMS Asia and Pacific Rim meetings. A separate financial account for the meeting series, with certain amount of initial endowment from IMS. The goal is to have the meeting series completely self-financed.
- b. The meetings can be run independently or jointly with local societies.
- c. The committee decides the meeting location and appoints local organizing committee chair and program committee chair. For better communication, the local organizing committee chair should be appointed as the co-chair of the program committee. Each chair forms his/her own committee.
- d. Local committee decides the venue of the conference and is charged of local logistics and seeking financial support from local government and other sources. Each meeting should try to assume full responsibility on financial arrangements, including determination of registration fee and short course tuitions. Minor deficit can be covered by the IMS-ARPM account. Minor surplus should be transferred to IMS-ARPM account if possible.
- e. Program committee decides the scheme of the meeting, invites keynote speakers, organizes invited sessions, issues call-for-paper, selects contributed papers and sessions, and plans the conference program.

**(4) Local IMS Sections and Affiliated Membership:** IMS could enter cooperative agreements with regional societies, and cooperate with them on membership agreements. For example, for some small additional membership charge, a member of a local society could become an IMS member. This surcharge might be managed fiscally within the region (e.g. the IMS-APRM account) and used to support activities that involve several societies in the area. Also, those affiliated members in each country/region can form a local IMS section, which may serve as local host for the IMS meetings. The sections can also organize more or less autonomously local IMS section conferences, workshops, short courses, etc.

**(5) Membership Drive:** With discounted registration for members and special discounts for new members, the conference can serve the purpose of membership drive. But how to make those people stay as members afterward can be a challenge. Discount on membership fee would help. The key is to provide valuable services to the members.

(6) Possible Inauguration Meeting: Committee member Byeong Park has contacted Korean Statistical Society. KSS has expressed strong interests to co-host the first IMS-APRM in Korea in the summer of 2008.

## **5. Summary**

The committee strongly endorses the establishment of an IMS meeting series in Asia and Pacific-Rim. We found it necessary, timely and feasible, with significant benefits to IMS.

To: Jim Pitman  
President, Institute of Mathematical Statistics

cc: Elyse Gustafson, IMS Executive Director  
Dipak Dey, Uwe Einmahl, Steve Evans, Kai-Tai Fang, Cindy Greenwood, Brenda MacGibbon, John Marden, Qi-Man Shao, Sue Wilson (Members, IMS Committee on Fellows)

From: Jianqing Fan, Chair, The IMS Committee on Fellows

Re: Final report of the Committee

The 2007 IMS Fellows Committee received nominations for 48 candidates in early February. We have completed our review. Please find this final report.

(I) We had three rounds of votes and discussions and came up with 23 elected fellows. These 23 names were finally voted as a group and I have received unanimous supports from the members of the committees.

(II) We recommend that the following 23 candidates be elected as fellows of the IMS, in alphabetical order:

Chen, Kani  
Chen, Ming-Hui  
Chen, Zhen-Qing  
Cheng, Ming-Yen  
Follmer, Hans  
Hickernell, Fred J.  
Hosoya, Yuzo  
Hu, Inchi  
Kosorok, Michael Rene  
Lahiri, Partha  
Li, Bing  
Li Gang  
Lin, Xihong  
Linton, Oliver  
Loh, Wei-Liem  
Ma, Zhi-Ming  
Raftery, Adrian E.  
Regazzini, Eugenio  
Sarkar, Sanat K.  
Silverstein, Jack William  
Vitale Richard A.  
Wand, Matthew Paul  
Zhou, Hongyu

(III) I have asked members to check the appropriateness of citations, if they are familiar with their work. However, I did not receive any feedbacks. I have also checked the citations of every elected member and did not find any significant deviations from the usual citations. Some of them might need editing or toning down. I would be happy to do this, if Elyse gives me a word file of the citations of these 23 new fellows.

Overall, the committee reckons that we have elected a very strong group as the fellows of the IMS.



## Report: Committee on Membership

The ad hoc committee on IMS membership consisted of four members; Chris Genovese, Claudia Klueppelberg, Kavita Ramanan with Lancelot James serving as Chair. The committee began its activities at the end of December. The committee then submitted their thoughts on membership issues and some possible methods to attract new members as well as enhance current membership. The committee agreed with and supported the IMS president's idea of the formation of IMS groups. Related to this, and the potential of these groups to be a non-invasive way of attracting membership the committee is exploring (**explored**) the formation of IMS geographical groups and the selection/nomination of potential coordinators and facilitators of such groups. Overall the committee focused on individual membership rather than membership at a corporate/institutional level.

**Committee on New Researchers**  
**Report of the Chair, Mayetri Gupta**  
**June 4, 2007**

The New Researchers' Conference (NRC) is an annual IMS conference dedicated to creating interaction between new researchers in the fields of Probability and Statistics. The Tenth NRC will be held at the University of Utah in Salt Lake City, July 24-28, 2007, immediately prior to the Joint Statistical Meetings, also to be held in Salt Lake City. All participants are expected to give a short, expository talk or contribute a poster on their research. In addition, the conference will consist of panel sessions of journal editors and funding agencies to discuss topics highly relevant to new researchers. The conference website is at <http://www.bios.unc.edu/~gupta/NRC>.

Of the 65 people who applied, 7 were rejected for the following reasons: 4 would receive their Ph.D. in 2008 or later; 1 had attended NRC in a previous year, and 2 missed the application deadline by more than a month. This left 58 "eligible" applicants who were invited to attend the meeting, 46 of them accepted. We are expecting 4 committee members will be present at NRC to help run the meeting.

**NRC 2007 organizers**

Program Chair: Mayetri Gupta (University of North Carolina at Chapel Hill)  
Local Chair: Xiaoming Sheng (University of Utah)

**NRC 2007 Invited speakers/panelists**

The IMS Tweedie New Researcher Invited Lecturer will be Samuel Kou (Harvard University), who was selected by the IMS Travel Awards Committee. Our confirmed invited speakers are Michael Newton (University of Wisconsin at Madison), Deborah Nolan (University of California at Berkeley), and David Banks (Duke University). The journal panel will include Susan Murphy (The Annals of Statistics), David Banks (Journal of the American Statistical Association), David van Dyk (Journal of Computational and Graphical Statistics), and Geert Molenberghs (Biometrics). The funding panel will include Grace Yang (National Science Foundation) Wendy Martinez (Office of Naval Research), and Ram Tiwari (National Cancer Institute).

**NRC 2007 funding**

Funding for NRC 2007 will be coming from the NSF (\$20,000), ONR (\$10,000), NSA (\$10,000). Part of a two-year award from the NIH (NCI) made late last year will also be available (\$9,000). Committee members Mayetri Gupta, Xiaoming Sheng and Peter Hoff were instrumental in securing these funds. We received much-needed support from Peter Craigmile, Xiaojian Xu, and Ryan Elmore, and administrative support from both the University of North Carolina at Chapel Hill and University of Utah.

**Proposed 11th NRC in Colorado**

Location: Colorado State University

Local chair: Ryan Elmore

Funding: Funding will be requested from the same organizations that have funded previous NRCs.

## PUBLICATION COMMITTEE REPORT.

The publication committee has been involved in the following projects over the past year, all working through ad hoc committees.

### I: Textbooks:

An ad hoc committee has begun to investigate the desirability and feasibility of the IMS expanding its publication activities by entering into the book market in more serious fashion. Three possible series are currently being investigated.

- (i) A Lecture Notes series, to replace the Lecture Notes and Monographs part of the Lecture Notes-Monograph Series.
- (ii) A Collections series, to publish conference proceedings, festschrifts etc, which actually make up the majority of recent volumes in the current LNM series.
- (iii) A Textbooks series, which would be a completely new venture.

The committee comprises Robert Adler, Peter Bickel, George Casella, Anthony Davison, Elyse Gustafson, Jim Pitman, and Sid Resnick.

### II: Copyediting and References:

Given recent changes and developments in the accessibility of electronic referencing, particularly the growing popularity of arXiv and the Mathematics Reviews data base, a committee is looking into providing seamless interfaces between IMS publications and electronic data bases. (Recall that all papers accepted by IMS journals now also appear in the open access arXiv collection.)

The same committee is also looking into the efficiency of copyediting procedures for IMS journals, with the complementary aims of making these more transparent to authors and reducing the pain that authors often go through as their papers are prepared for publication.

This committee is large, but the key players are Jim Pitman and others who are working ex-officio as editors and contributors to the production process of IMS journals.

### III: Impact Factors:

Early in 2006 a committee was set up to investigate the (ab)use of impact factors, citation counts, etc, within areas of IMS interest.

This group has now basically been replaced by a joint committee of IMS, AMS and ICIAM, under IUM auspices, with the same goals but with its charge broadened to cover the general mathematical sciences. This joint committee on the "Quantitative Assessment of Research" has been charged with the following tasks:

1. To evaluate to what extent the ISI impact factor is a significant indicator for the quality of a researcher, a department, or similar institution in statistics or mathematics.
2. To determine to what extent the ISI impact factor can be used to compare the quality of research in mathematics with that in other disciplines.
3. To determine whether or not the ISI impact factor has any bias with respect to language, region, or length, source or field of publication, interdisciplinary work.
4. To examine these questions for a selection of other recently proposed measures based on citation data.

5. To propose suitable substitutes for these measures based on citations.
6. To list the possible dangers or advantages that the widespread use of impact factors and similar simple measures may have on publication behaviour, recruitment, balance between scientific disciplines, etc.

The committee has been asked to create a summary of its finding to be endorsed and publicly distributed by the Executive Committees of ICIAM, IMS, and IMU. It is requested to support its conclusions by examples and statistical data to be provided in additional documents meant to provide evidence and a solid basis for the findings.

This charge is clearly far more than a committee of three members (one from each organisation) can possibly produce in the year it was given, but hopefully it will produce be the germ from which a larger project can grow.

The IMS representative on the joint committee is Robert Adler.

The members of the IMS Impact Factors committee are Robert Adler, Terry Speed, Andy Stevens and Marc Yor.

Robert Adler  
Haifa, June 13, 2006

## **Committee to select editors**

Soren Asmussen (Chair)  
Steve Lalley  
Hans Kuensch

In 2006/07, two editors for new journals have been suggested by the committee and later approved by the IMS Council: Jon Wellner for Statistics Surveys and Larry Wasserman for Electronic Journal of Statistics.

The committee is currently searching for a successor for Ed George, whose term for Statistical Science expires by the end of 2007.

Soren Asmussen

## **Special Lecturers Committee report**

June 2007

The task for the Special Lecturers Committee in 2007 was to make a proposal for the selection of

1. One Wald Lecturer (for 2008)
2. One Neyman Lecturer (for 2008)
3. Eight Medallion Lecturers (for 2009)

The Committee started its work on March 30, 2007, and concluded its specific selection tasks on May 31, 2007.

Regarding the work of this year's committee, there are two specific issues to be mentioned:

1. After discussion the committee decided to first deal with the selection of the Named Lecturers (Wald and Neyman Lecturers) and in a second stage with the selection of the Medallion Lecturers. In addition, the Committee first selected the Wald Lecturer and in a subsequent stage dealt with the selection of the Neyman Lecturer.
2. This committee was the first one working with the division into five categories for the Medallion Lecturers, namely Theoretical Probability (TP), Applied Probability (AP), Theoretical Statistics (TS), Applied Statistics (AP) and Interdisciplinary (I).

The reason for the first point was that the names of the Named Lecturers were requested by the end of April 2007, and given the short time frame it would have been very difficult to deal with the selection of the Named and Medallion Lecturers simultaneously.

This committee, during the execution of its task, spent a considerable amount of time on discussions about selection and voting procedures, and passed conclusions of these discussions in the form of recommendations to the IMS council and future committees.

### **General remarks about working procedures**

The Committee work involved the following main steps:

1. Discussion and approval of the procedures.
2. Search, discussion and selection in two rounds for Wald and Neyman Lecturers, first dealing with the selection of the Wald Lecturer and in a subsequent stage with that of the Neyman Lecturer.
3. Same scheme for the Medallion Lecturers.

During the whole selection process (nominations, voting rounds ...) the Committee kept in mind the need to balance issues such as gender, geographical diversity, research areas, among others.

For the Medallion Lecturers, the selection procedure was such as to select in the first round 1 lecturer in Theoretical Probability, Applied Probability, Theoretical Statistics, Applied Statistics and in the Interdisciplinary category, guaranteeing in this way the minimal requirements in the "Guidelines". The second round of the Medallion Lecturers involved a selection across categories.

For the Wald and Neyman Lecturers the selection started from lists of names containing:

Wald: 7 names (one woman)  
Neyman: 11 names (one woman)

For the Medallion Lecturers the selection started from a list of names containing:

Theoretical Probability: 3 names  
Applied Probability: 4 names (two women)  
Theoretical Statistics: 5 names (one woman)  
Applied Statistics: 4 names  
Interdisciplinary: 4 names (one woman)

For the assignments to meetings, the Committee took into account availability of sessions at the meetings, typical audience at the meetings and research areas of speakers.

### **Proposed selections and assignments to meetings**

For the Named Lecturers, the Committee concluded its work with the following proposed selection to the IMS Council:

Wald Lecturer: Richard Durrett (Cornell University, USA)  
Neyman Lecturer: Peter McCullagh (University of Chicago, USA)

For the Medallion Lecturers, the Committee concluded its work with proposing the following selection to the IMS Council:

Gordon Slade (TP), University of British Columbia, Canada;  
Claudia Kluppelberg (AP), Technical University Munich, Germany;  
Gareth Roberts (AP), University of Warwick, UK;  
Tony Cai (TS), University of Pennsylvania, USA;  
David Madigan (AS), Rutgers University, USA;  
Peter Buhlmann (I), ETH Zürich, Switzerland;  
Gabor Lugosi (I), Universitat Pompeu Fabra. Spain;  
Sam Kou (I), Harvard University, USA

For the assignments to meetings, several options were discussed, but the Committees general feeling was that the best fit is

1. JSM 2009/IMS Annual Meeting (Washington, DC, Aug 2-6): 4 sessions  
Tony Cai (TS), Peter Buhlmann (I), Gabor Lugosi (I), Gareth Roberts (AP)
2. ENAR 2009 (San Antonio, TX, March 15-18): 1 session  
Sam Kou (I)
3. WNAR 2009 (TBA, end of June): 1 session  
David Madigan (AS)
4. SPA 2009 (Berlin, Germany, July 27-31):  
Gordon Slade (TP), Claudia Kluppelberg (AP)

The Special Lectures Committee; Chair: Irène Gijbels; Date: June 5, 2007.

## Committee on Travel Awards

Tweedie Award was approved by Council and can be viewed here:

<https://imstat.updatelog.com/W375093>

---

Laha Award Report

February 21, 2007

Jim Pitman  
IMS President

Dear Jim,

I am writing you on behalf of the 2007 IMS Committee on Travel Awards regarding the recommendation for the 2007 Laha Awards.

This year we had 28 applicants, of which 20 were students and 8 new graduates. As it has been the case during the last two years, for 2007 we had several strong candidates.

The committee has selected 15 winners whose names are below. Of them, 12 are students and 3 new graduates.

Best regards, Victor Perez-Abreu, Chair, IMS 2007 Committee on Travel Awards

### 2007 Laha Award Recipients

Chandra, Hukum  
De Blasi, Pierpaolo  
Du, Meng  
Li, Hongfei  
Li, Huilin  
Li, Yingying  
Liu, Rong  
Lu, Lu  
Luo, Sheng  
Minin, Vladimir  
Rocha, Guilherme  
Sen, Bodhisattva  
Wang, Lifeng  
Wintenberger, Olivier  
Wu, Yichao



Annals of Applied Probability  
Annual Report 2007  
June 14, 2007

In 2006 there were 220 via the Electronic Journal Management System (EJMS) for 2006. My 6 mos projection had been 224 papers at time of last report, so rates were quite stable. The 10 year historic submission rates are now: 134, 183, 145, 170, 137, 149, 164, 196, 207, 220 manuscripts. The 2006 rate continues to apply to 2007, with 110 manuscripts received in the first five and one-half months of 2007 to date. The submission rate appears to be quite stable.

Ignoring papers still under review, the Acceptance/Rejection split for 2006 was 51/110 (31% accepted). This is essentially the same acceptance rate as that for 2005. There is no explicit effort to control the number of publishable papers in AAP, beyond quality control standards imposed by peer referees and the editorial board.

The number of printed pages for 2006 was 2275 and these were printed according to the Fat Issue Model of 4 issues.

A Lean Issue Model was proposed by the previous editor Robert Adler and approved by IMS council. This model is being applied for volume 17. To date AAP 17(1) 419 pages; AAP 17(2) 358 pages, AAP 17(3), 321 pages. The issue sizes should continue to range between 350 to 450 pages, depending on backlog. Adjustments are being made to maintain some backlog for uniform scheduling within the new model. Based on the current backlog the journal is operating on a median 5-6 months from acceptance to print.

The EJMS continues to be effective with infrequent minor glitches, thanks in a very large part to the dedicated and prompt support provided by Mattson Publishing Services. Continued flexibility to achieve a personalized EJMS design by VTEX for IMS is also an essential aspect of the system. In preparing this report I was reminded that it would be helpful to have an automated summary statistics data base on the review times, submission rates, acceptance rates etc.

The review time is often longer than the target 3 months. Some papers can be quite technical and long, and the process of both finding willing

reviewers and allowing time to conduct the review can take time. Allowances need to be made for this, coupled with the many-fold other demands on peer reviewers and Associate Editors.

The current Editorial Board consists of second term continuations by: Paul Dupuis, Maury Bramson, Claudia Kluppelberg, Russell Lyons, Leonid Mytnik, Timo Seppalainen, Denis Talay, and Ofer Zeitouni.

New (first term) members are: Jinho Baik, Rabi Bhattacharya, Brigitte Chauvin, Rick Durrett, Luc Devroye, James Allen Fill, Jean-Pierre Fouque, Charles Newman, Vladas Sidoravicius, Qi-Man Shao, Jason Ross Schweinsberg, Prasad Tetali, Enrique Thomann, and Ruth Williams. Two new AEs were recently added: David Gamarnik and Steve Krone. to replace three departures.

The success of the journal is mostly in the hands of this very hard working and dedicated group of individuals and their anonymous referees who continue to do an outstanding job for the IMS and the larger profession.

Ed Waymire

ANNALS OF APPLIED STATISTICS, EDITORIAL REPORT  
June 1, 2007

.....

Last year the IMS council voted to inaugurate a new "Annals", devoted to statistical applications- in recognition of the importance and vitality of contemporary applied statistics. The Annals of Applied Statistics (AOAS) has three area editors:

Stephen Fienberg: social science, government, sample surveys, and economics

Michael Newton: biology, medicine, and genetics

Michael Stein: physical science, computation, engineering, and the environment.

Papers are submitted for assignment to Editor-in-chief Bradley Efron; authors get to suggest the appropriate area for review, and this has been followed in all but two cases so far. Once assigned, the area editor has complete editorial control. A distinguished panel of 40 associate editors works under the shared direction of the editors. The four editors, Efron, Stein, Newton, and Fienberg, have worked closely together in developing AOAS.

AOAS is published in both print and electronic form. As soon as a paper is accepted it is available electronically on our website,

<http://www.imstat.org/aoas/> .

The site has had over 65,000 hits since opening in September 2006. June 2007 will welcome the print edition of Issue 1, published in the traditional Annals format and front page, with a pink cover.

AOAS opened for general submissions in November 2006. A total of 151 papers had been submitted by May 31 of this year. Of these, 20 were accepted for publication, 58 rejected, and 25 suggested for resubmission after rewriting. (A large proportion of rejections were of worthy papers that nevertheless did not have sufficient applied content.) 45 papers were under review. The editors have set a time limit of three months on initial reviews, which has been successfully met for more than 95% of the papers. Submissions have been divided roughly evenly between the three areas, with a modest excess in biostatistics.

Bradley Efron

## **Annals of Probability 2007**

Here are the statistics for the Annals of Probability for submissions in calendar year 2006:

Submissions: 230  
Accept: 49  
Conditional accept (after revision): 23  
Rejected or withdrawn: 141  
Still in review: 17.

This shows a relatively low acceptance rate. There are a few reasons for this:

- There has been a concerted effort to raise the quality and reduce the backlog of the Annals.
- Those papers that seems more appropriate for Annals of Applied Probability or Annals of Statistics were rejected immediately with letters suggesting those journals were more appropriate. These decisions were made without regard to the apparent quality of the paper. The rationale is that all of the Annals ... are intended to be premier journals and the difference is in the subject area.
- Because of some quirks in the electronic submission system (and persistence of a few authors) some papers that eventually got rejected or withdrawn actually were submitted several times. There is a little bit of overcounting in the number of submissions (maybe a total of about 10 overcounts).

The intent is to continue to have high standards to make the Annals a premier journal. As a point of comparison: if we publish six 400-page issues a year, this corresponds to about 75--85 papers per year (given current page lengths). Our acceptance rate after the still in review papers are decided on will match this (conditioned on still being out for review, the probability of acceptance is higher).

Greg Lawler

## **The Annals of Statistics, 2007 Annual Report**

Susan Murphy and Bernard Silverman, Editors

**SUBMISSIONS:** Submissions were up in 2006 and very high relative to the historical norm: 397 manuscripts were received (in comparison to 292, 274, 319, 362, 323, 343 in 2000 – 2005, respectively). For the first four months of 2007, there are 173 submissions (higher than 128 submissions during the same period in 2006). Our editorial policy continues to emphasize that The Annals of Statistics aims at publishing research papers of highest quality reflecting the many facets of contemporary statistics, including all mathematical, methodological, computational and interdisciplinary work.

**ACCEPTANCE RATE:** During 2006, we have made 77 acceptance, 279 rejection, and 67 tentative decisions on all live manuscripts. The acceptance rate among these 356 final decisions in 2006 is about 22% percent. This together with 61 acceptance, 71 rejection, 34 tentative decisions in the first four months of 2007 by the prior editors, give an acceptance rate of 28% among 488 papers with final decisions. This is compared with 29% for the manuscripts submitted during 2005. The historical acceptance rate for the Annals has been about 25-30 percent. At the time of this writing (Early June, 2007) we have 254 papers in the EJMS system of which 12 papers have been accepted and 124 papers have been rejected with the remaining in various stages of review (some of these papers are from the prior editors' tenure).

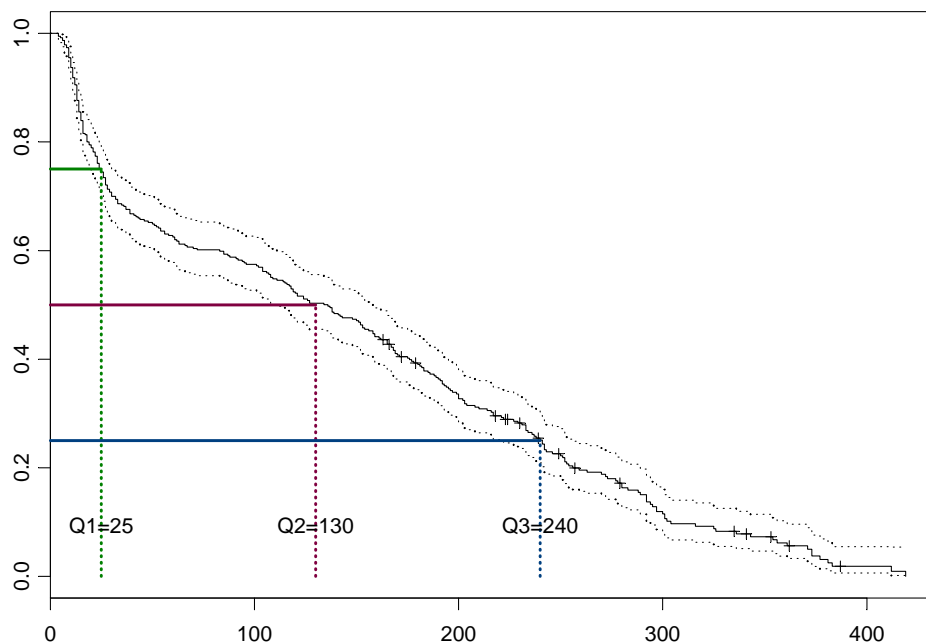
**BACKLOG:** During 2006, we filled volumes six to seven months in advance of the official volume date, and we are thereby achieving on-time production. The sizes of recent volumes are 1998(2469), 1999(2080), 2000(1795), 2001 (1811), 2002(1811), 2003(2095), 2004(2775), 2005(2999), 2006( 3050). There is a current backlog of about 3.5 issues. This is about one issues worth of manuscripts larger than it was last year at this time. Manuscripts accepted now may not appear until June 2008.

**PAGE REQUEST:** The current page allotment is 3000 pages; to reduce the backlog it would be good to allot 3300 pages (about .5 an issue more) for 2007. This is a conservative request particularly given the increase in submitted papers.

**EJMS:** In January, 2007 we moved to an electronic journal manuscript system (EJMS). This move has proceeded smoothly with much credit due to Geri Mattson, our Publishing Services Manager and the new Associate Editors. The Annals web page is now being maintained by Laila Hakem in connection with all the rest of the IMS website. It contains features, such as tables of contents of back issues, up-to-date lists of accepted papers, linking of accepted papers to authors' URLs, and editorial policies.

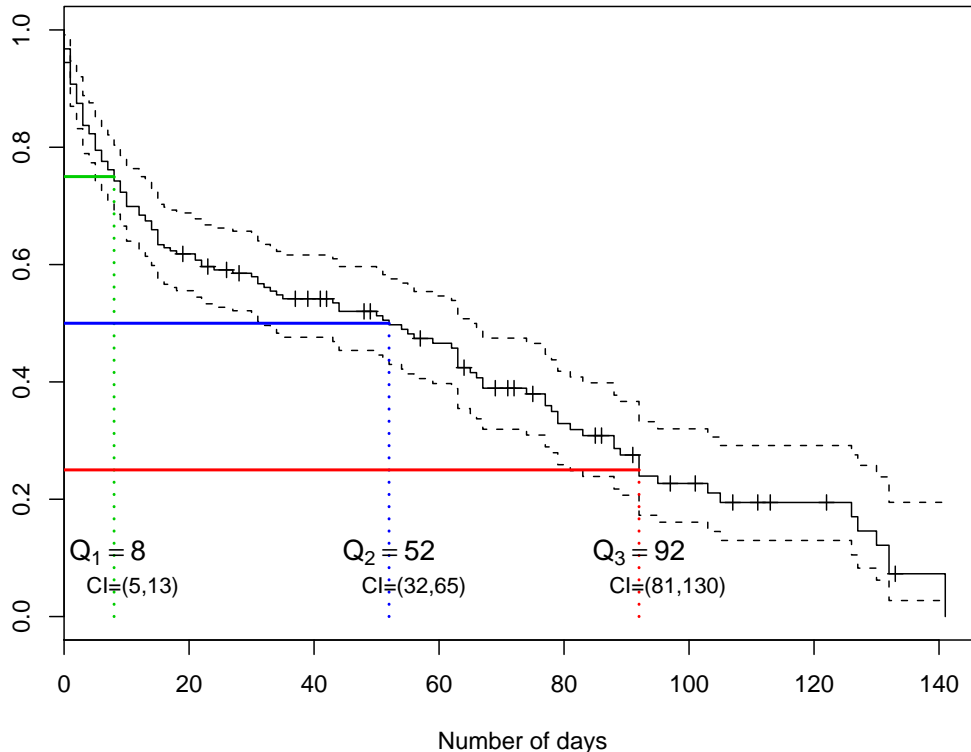
REVIEW TIMES: The quartiles of the distribution of the initial decision times for manuscripts submitted in 2006 are 25 days, 130 days and 240 days. They are decisively shorter than the quartiles of 40 days, 180 and 255 days from 2005. The details of the review times are summarized in the graph below, which provides an estimated survival curve of initial decision times for submissions in 2006.

Survival function of review times



The quartiles of the distribution of the initial decision times for 173 manuscripts submitted Jan.-April, 2007 are 8 days, 52 days and 92 days (see the second graph).

### Survival function of review times



With the cooperation of our board of Associate Editors and Referees, we will continue to make efforts to maintain this distribution.

ACKNOWLEDGEMENTS: The former Editors, Morris L. Eaton and Jianqing Fan, would like to thank our Editorial Coordinators and Editorial Board for all their help that makes the journal running smoothly. In addition, our Editorial Coordinators, Sarah Johnson Sexton and Mary Beth Falke, and our Editorial Board, Yacine Aït-Sahalia, Peter Bühlmann, T. Tony Cai, Ming-Yen Cheng, Dorota M. Dabrowska, Rainer Dahlhaus, Anirban DasGupta, Holger Dette, Holger Drees, Lutz Dümbgen, Sam Efromovich, Charles J. Geyer, Subhashis Ghosal, Irene Gijbels, Peter Hall, Xuming He, James P. Holbert, Vladimir Koltchinskii, Michael R. Kosorok, Jan T. A. Koster, Bing Li, Jun Liu, Enno Mammen, Adam Martinsek, Thomas Mathew, Rahul Mukerjee, Hans-Georg Müller, Per A. Mykland, Michael D. Perlman, Dominique Picard, Donald St. P. Richards, Christian P. Robert, Peter M. Robinson, Qi-Man Shao, Xiaotong Shen, Vladimir Spokoiny, Michael Stein, Sara van de Geer, Mark van der Laan, Larry Wasserman, Michael Wolf, Qiwei Yao, Yi-Ching Yao, Bin Yu, Ruben H. Zamar, are currently providing the support and dedication that is essential to the success of The Annals of Statistics.

The current Editors, Susan Murphy and Bernard Silverman, would like to thank the members of the editorial board for working hard to use the EJMS website and for providing quality reviews quickly; the editorial board is composed of Peter Bühlmann, Enno

Mammen, Peter Bickel, Pascal Massart, T. Tony Cai, Rahul Mukerjee, Ray Chambers, Hans-Georg Müller, Ming-Yen Cheng, Per A. Mykland, Anirban DasGupta, Byeong Park, Lutz Dümbgen, Wolfgang Polonik, Sam Efromovich, Gareth Roberts, Subhashis Ghosal, Peter M. Robinson, Irene Gijbels, Andrea Rotnitzky, Richard Gill, Hvard Rue, Peter Hall, Theofanis Sapatinas, Xuming He, Clay Scott, Chris Holmes, Qi-Man Shao, Tailen Hsing, Boxin Tang, Feifang Hu, Craig Tracy, Edward L. Ionides, Alexandre Tsybakov, Vladimir Koltchinskii, Ingrid Van Keilegom, Michael R. Kosorok, Stephen G. Walker, Bing Li Keith Worsley, Runze Li, Qiwei Yao, Albert Lo, Chunming Zhang and Wei-Liem Loh. Lastly we would like to thank Geri Mattson, for easing the transition to EJMS.



## ***IMS Bulletin: Report to Council 2007***

Bernard Silverman stood down as *IMS Bulletin* Editor after five years in December 2006, and was replaced by Xuming He (University of Illinois at Urbana-Champaign), with Tati Howell remaining as Assistant Editor. We have appointed a small board of Contributing Editors: Terry Speed (Berkeley/WEHI) continues with his regular column, and is joined by Peter Bickel (Berkeley), Nicole Lazar (Georgia), Louis Chen (NUS Singapore) and Rick Durrett (Cornell). The role of the CEs is to contribute, either directly or by soliciting articles.

This year, we have published contributed articles on a number of topics of interest to IMS members, including profiles of junior faculty members, thoughts and issues on student mentoring, and on applied probability journals. Articles on potentially controversial issues are being contemplated. In addition, we are also working towards more coverage of the statistics/probability research communities outside North America, and hope to see more interest in this direction.

In this past year, we have moved to a paperless (PDF-based) workflow with The Sheridan Press. The completed PDF is now uploaded directly to the Sheridan website, and proofs are checked online. This has meant a print cycle about 3 days shorter, and perhaps more significantly, a saving to IMS of around \$700 per year in shipping charges.

The PDF version of the *Bulletin* (at [www.imstat.org/bulletin](http://www.imstat.org/bulletin)) is still popular, receiving around 5,000 downloads per month (data from January & February 07 website usage report [www.imstat.org/reports/](http://www.imstat.org/reports/)). However, we acknowledge that PDF is not the most ideal format for web viewing. Tati is working with Andy Stevens, IT Project Manager, towards being able to display the information from the *Bulletin* in a more web-friendly format. We are also contemplating making past articles of the *Bulletin* more easily searchable online. After more careful consideration, we plan to submit a plan with a cost estimate to the Executive Committee.

Across a year, there is substantial variation in the proportions of news items, meeting reports and job advertisements, and we continue to work to find a balance of interesting items for IMS members and other *Bulletin* readers.

As ever, we rely very much on IMS members to volunteer their news. We invite all members, and particularly Council members, to be proactive in this area – and in offering to write longer articles. Please don't be shy! We receive occasional feedback (mostly positive) which is very welcome, but we would like to engage more with readers. If anyone has comments, suggestions or feedback, please email [bulletin@imstat.org](mailto:bulletin@imstat.org).

*Xuming He & Tati Howell*  
*June 2007*

## **Report to Council - IMS Lecture Note and Monograph Series**

The Series continues to serve the IMS membership by providing a venue for lecture notes, monographs, conference proceedings, and festschriften.

The following volumes have appeared over the past year:

LNMS #50

**Recent Developments in Nonparametric Inference and Probability**

Jiayang Sun, Anirban DasGupta, Vince Melfi, Connie Page, Editors

LNMS #51

**High Dimensional Probability**

Evarist Giné, Vladimir Koltchinskii, Wenbo Li, Joel Zinn, Editors

LNMS #52

**Time Series and Related Topics. In Memory of Ching-Zong Wei**

Hwai-Chung Ho, Ching-Kang Ing, Tze Leung Lai, Editors

More details are available at <http://www.imstat.org/publications/lecnotes.htm>

The following volumes are in production and will appear shortly:

LNMS #53

**Multivariate Statistics: A Vector Space Approach**

Morris L. Eaton (scanned version of his now-out-of-print book)

LNMS #54

**Complex datasets and inverse problems: tomography, networks and beyond**

Regina Liu, William Strawderman & Cun-Hui Zhang, Editors

LNMS #55

**Asymptotics: particles, processes and inverse problems**

Eric Cator, Geurt Jongbloed, Cor Kraaikamp, Rik Lopuhaä, Jon Wellner, Editors

Around 8 more volumes are in various stages of preparation.

It is a pleasure to thank Executive Director Elyse Gustafson for her continuing guidance and assistance in the past year, and Geri Mattson for her efficient technical help.

Respectfully submitted,  
Anthony Davison and Rick Vitale

June 13, 2007

## Report of the Managing Editor—Statistics

**Paul Shaman**

The 2006 page count for *The Annals of Statistics* totaled 3,047, and *Statistical Science* published 588 pages in 2006.

As of this writing (June 15th) final corrections are being made to the April 2007 issue of *The Annals of Statistics*, page proofs for the June 2007 issue are being read and page proofs for the August 2007 issue are ready for reading. The lineup for the October 2007 issue has been set. There are 75 unassigned pending articles, which will fill about four more issues. Thus, on average, the length of time from acceptance of an article until it appears in print in *The Annals of Statistics* is currently about 14 months.

As of this writing page proofs are being read for the February 2007 issue of *Statistical Science*, and pages are in production for the May 2007 issue.

The tables following give page counts for the past two years.

### *The Annals of Statistics*

Issue	2005 printed pages	2006 printed pages
February	462	558
April	514	489
June	478	531
August	527	488
October	524	523
December	493	458
Total	2998	3047

### *Statistical Science*

Issue	2005 printed pages	2006 printed pages
February	110	112
May	93	186
August	111	128
November	116	162
Total	430	588

The February 2007, April 2007, June 2007 and August 2007 issues of *The Annals of Statistics* have 463, 465, 420 and 497 pages, respectively.

The February 2007 issue of *Statistical Science* has 152 pages.

The following table gives figures for the page count of *The Annals of Statistics* for the years 2002-2006.

<i>The Annals of Statistics</i>		
Year	Printed pages	No. of articles <sup>1</sup>
2002	1809	64
2003	2092	76
2004	2772	94
2005	2998	98
2006	3047	100

<sup>1</sup>A discussion paper is counted as one article, and corrections and addenda are not included in the count. There were three discussion papers in 2006.

For the years 2002-2006 the printed pages for *Statistical Science* totaled 467, 531, 737, 430 and 588, respectively.

Annual Report - *Statistical Science*  
Edward I George, Executive Editor  
June, 2007

As of May 31, 2006, 37 manuscripts were at various stages of review or revision for *Statistical Science*. From June 1, 2006 – May 31, 2007, an additional 119 manuscripts were submitted. Of the total 156 manuscripts considered during this period, 63 were rejected, 31 are still in various stages of review or revision, and 62 have been accepted.

Month	Received	Rejected	Under review or revision	Accepted
Pre Jun 06	37	14	6	17
June 06	23	7	1	15
Jul 06	9	5	2	2
Aug 06	9	5	2	2
Sept 06	7	2	2	3
Oct 06	11	8	1	2
Nov 06	5	2	3	0
Dec 06	2	1	0	1
Jan 07	15	5	2	8
Feb 07	9	5	0	4
Mar 07	13	5	5	3
Apr 07	9	3	3	3
May 07	7	1	4	2
<b>Total</b>	<b>156</b>	<b>63</b>	<b>31</b>	<b>62</b>

I am pleased to report a continual increase both the quality and the quantity of submissions to *Statistical Science*. We currently have a backlog of more than two issues. Two special issues for 2008 are under preparation: “A Half Century of Minimax Shrinkage Estimation” (Guest Editor - Bill Strawderman), and “Thirty Years of the EM Algorithm” (Guest Editors – Xiao Li Meng and David Van Dyke). I anticipate that the total manuscript pages for 2007 will be around 600. Roughly the same number of manuscript pages should be planned for 2008.

With only one exception, all submissions to *Statistical Science* since June 1, 2006 have come through the EJMS system. Furthermore, virtually all communications between the Editors and me, and between the authors and me, now occur within the system. However, I don’t believe there is very much interaction within the system between the Editors and referees, not that this is a problem. I am very grateful to both Mattson Publishing Services and VTEX, who continue to be very responsive to my needs. I am also hopeful that as we go forward, EJMS will be further enhanced to provide more record keeping summaries.

Finally I would like to gratefully acknowledge the efforts of my Editorial Board: Roger Berger, Alicia Carriquiry, Dean Foster, Constantine Frangakis, Sallie Keller-McNulty, Rob McCulloch, Sally Morton, Peter Mueller, Richard Smith, Marty Wells and Mike West, and the invaluable editorial support I have received from Elyse Gustafson, Patrick Kelly, Geri Mattson and Paul Shaman.

UNIVERSITY OF WASHINGTON  
DEPARTMENT OF MATHEMATICS  
BOX 354350  
SEATTLE, WASHINGTON 98195-4350

June 2, 2007

*e-mail: burdzy@math.washington.edu*  
*FAX: (206) 543-0397*

### **Annual report of the IMS Web Editor**

The last year was spent on the development of the new IMS Web site, with little attention to technical enhancements of the current Web site. However, the contents was updated continuously, simultaneously on the current Web site and the test installation of the new site. There were considerable delays in the development of the new service called "Online Marketplace". This will be a part of the Web site where all financial transactions are made. IMS members and the general public will be able to purchase books, journals, and pay membership dues using credit cards online. At this point, all the basic functionality is there but a number of fixes and enhancements are needed before the new Web site can go live online.

The main development of the new Web site was outsourced overseas to save money. The cost of this decision turned out to be a considerable delay in the delivery of the product. Starting June 2007, further development of the new Web site will be supervised on the technical side by Andy Stevens, the new IMS IT Manager. At this point, it seems that the new Web site should be operational within a month or two.

Sincerely yours,

Krzysztof Burdzy

**Report of the Treasurer  
Supplemental 2007  
Jiayang Sun**

**MEMBERSHIP AND SUBSCRIPTION DATA**

Table 1 shows the census data for 2007 memberships through 6/30/2007. Chart 1 and 2 show data for members in line and pie format. Table 1 and 2 show subscription data for members and non-members. Chart 3 shows trends for non-member (institutional) subscriptions.

Membership has shown a slight decrease. A large percentage in the decrease goes to the reclassification of the Organizational membership. Prior to 2007, we had many libraries classified into this membership, but in order to better serve them and departments, we changed the organizational membership to focus on departments and other non—library entities. Libraries now receive their subscriptions directly as institutional subscribers, not counted as organizational members any longer. Therefore, you will see growth in the institutional subscriptions that reflects the movement of these former organizational members (see “non-member and institutions” in Table 2). Additional membership decreases have occurred in the student and new graduate membership categories. These categories both peaked in 2006 and now appear to be leveling off. The core of our membership, regular, life, reduced country, and retired categories, remains strong and stable with some slight increase in total members in these categories.

271 IMS members are also members of the Bernoulli Society and/or the International Statistical Institute via the discounted membership program offered by our societies. In addition, 60 IMS members have opted to join APS-INFORMS via our discounted membership offer.

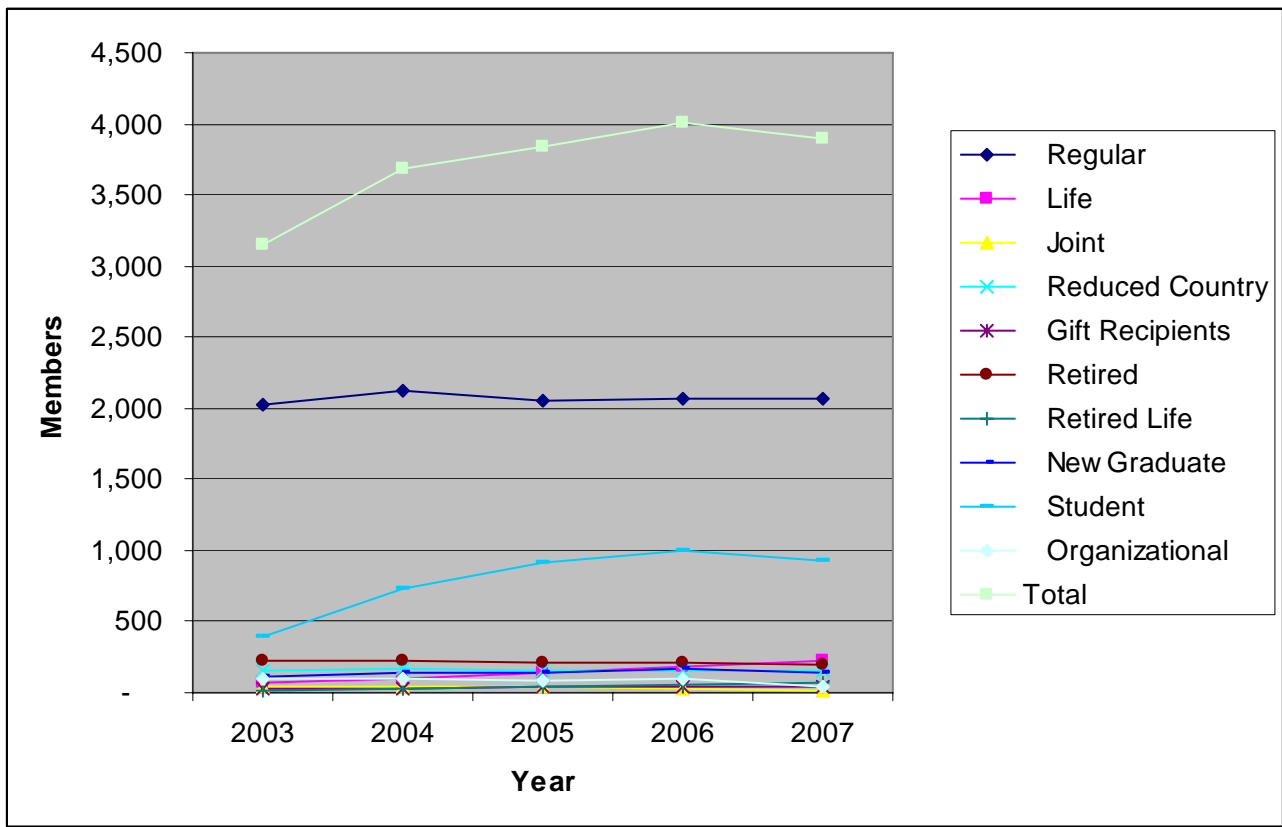
Subscription to print journals is decreasing for two reasons. First, the change in the organizational membership category increases income to the IMS by charging all libraries and institutions the same rate. Secondly, the trend of members opting to use the gratis electronic access rather than ordering print journals does not affect the bottom line since journals are priced at cost rates for individual members.

Not surprisingly, electronic subscriptions for members and institutions continue to rise.

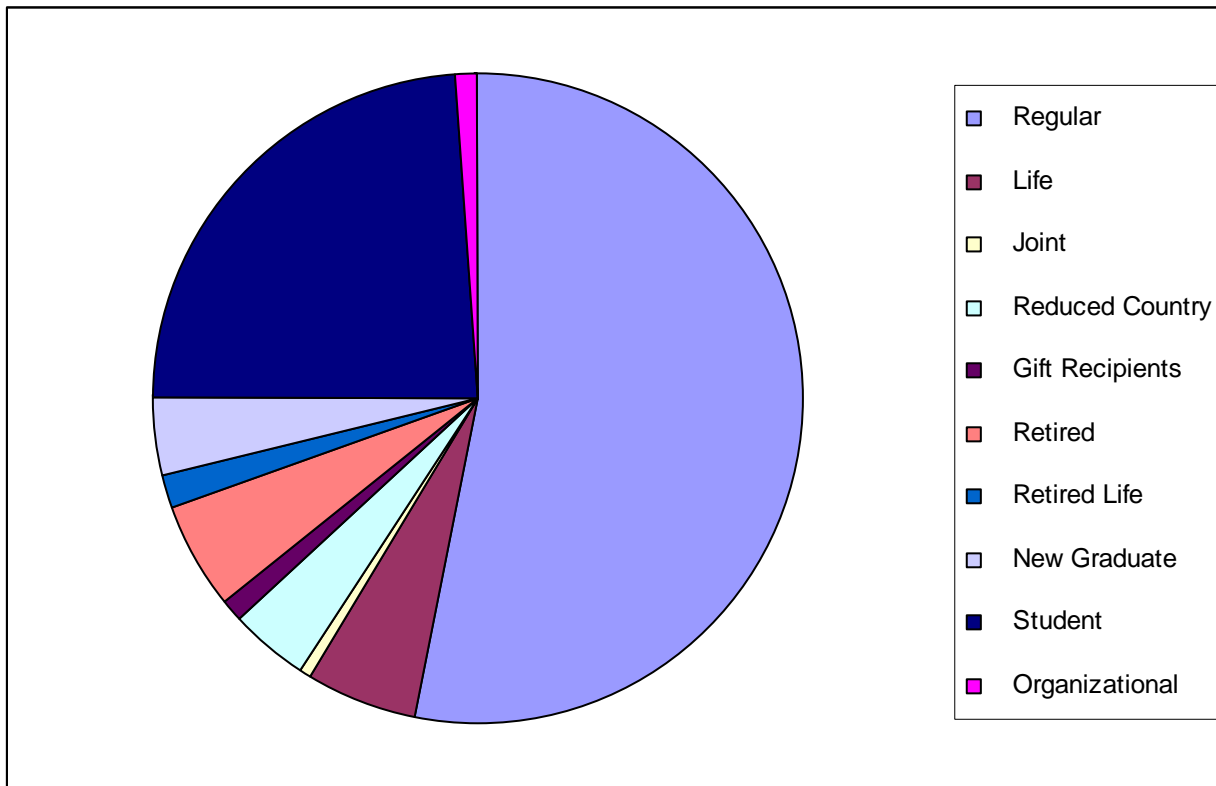
**Table 1. 2007 Member Data (6/30/2007)**

<b>MEMBERS</b>	<b>6/30/2003</b>	<b>6/30/2004</b>	<b>6/30/2005</b>	<b>6/30/2006</b>	<b>6/30/2007</b>
Regular	2,028	2,130	2,058	2,063	2,065
Life	69	97	139	183	221
Joint	36	41	39	22	17
Reduced Country	152	162	154	156	157
Gift Recipients	22	25	38	45	46
Retired	218	222	214	206	197
Retired Life	18	31	46	58	72
New Graduate	118	145	145	165	144
Student	395	731	910	1,005	935
Organizational	92	101	91	102	44
<b>Total</b>	<b>3,148</b>	<b>3,685</b>	<b>3,834</b>	<b>4,005</b>	<b>3,898</b>

**Chart 1. Individual Membership Trends**



**Chart 2. Membership distribution.**

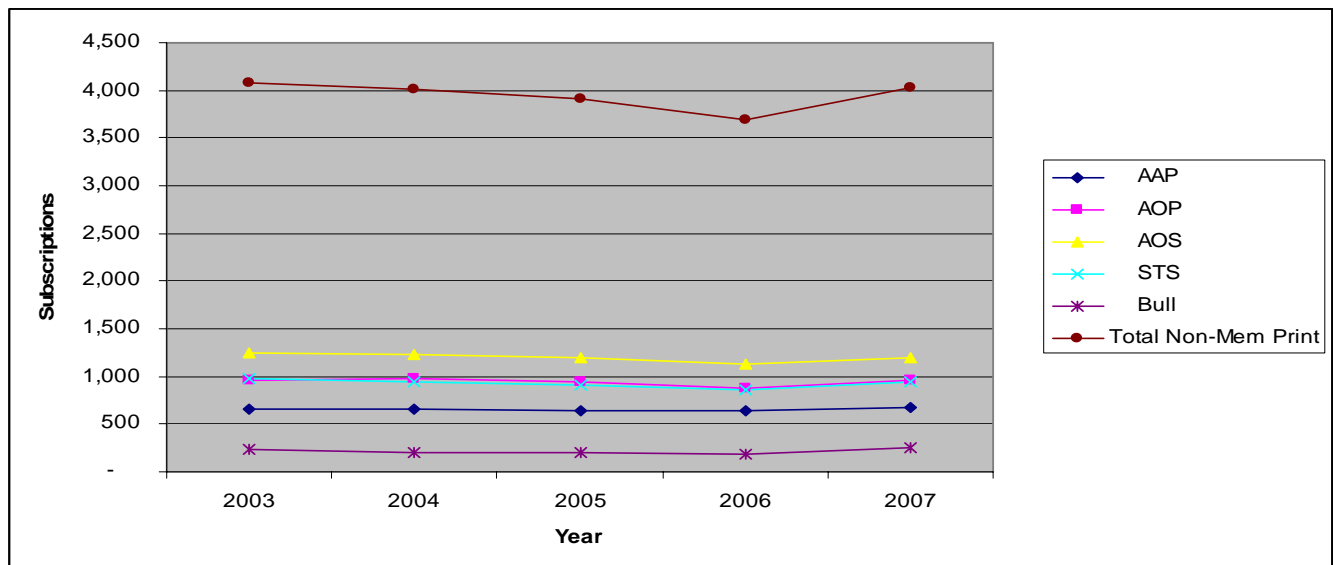




**Table 2. Member and Non-Member Subscription Data (6/30/2007)**

<b>PRINT SUBSCRIPTIONS</b>		<b>6/30/2003</b>	<b>6/30/2004</b>	<b>6/30/2005</b>	<b>6/30/2006</b>	<b>6/30/2007</b>
Members						
AAP		757	807	768	745	443
AOP		817	858	798	763	486
AOS		1,698	1,828	1,769	1,667	1,414
STS		2,412	2,567	2,455	2,325	1,968
Total Member Print		5,684	6,060	5,790	5,500	4,311
Non-Member & Institutions		<b>6/30/2003</b>	<b>6/30/2004</b>	<b>6/30/2005</b>	<b>6/30/2006</b>	<b>6/30/2007</b>
AAP		665	658	645	634	681
AOP		961	975	946	873	957
AOS		1,240	1,233	1,204	1,123	1,197
STS		974	943	912	862	942
Bull		231	210	199	192	258
Total Non-Mem Print		4,071	4,019	3,906	3,684	4,035
Total Print Subs						
AAP		1,383	1,465	1,413	1,379	1,124
AOP		1,725	1,833	1,744	1,636	1,443
AOS		2,864	3,061	2,973	2,790	2,611
STS		3,294	3,510	3,367	3,187	2,910
Bull		3,331	3,996	4,124	4,299	4,200
Total Print Subs		12,597	13,865	13,621	13,291	12,288
<b>ELECTRONIC SUBSCRIPTIONS</b>						
Members						
AAP		415	686	827	934	
AOP		453	711	852	950	
AOS		541	941	1,166	1,333	
STS		330	877	1,076	1,243	
Total Member Electronic		1,739	3,215	3,921	4,460	
Non-Member Institutions						
AAP		na	486	496	572	
AOP		na	694	700	790	
AOS		na	816	817	932	
STS		na	633	643	728	
Total Inst Electronic		na	2,629	2,656	3,022	

**Chart 3. Non-Member (Institutions) Print Subscriptions Trends**



## **FINANCIALS**

The IMS is taking actions to increase income and decrease expenses as appropriate. We continue to adjust institutional rates to accommodate the consolidation of subscriptions by universities. Because fully paid memberships continue to increase slightly, we are gaining income in this area. Last year, we adjusted member subscription rates to cost in order to properly cover our expenses.

The IMS has been expanding its journal offerings by partnering with Bernoulli Society and Institut Henri Poincaré. Both partnerships will increase exposure for all journals and give us some much needed bundling offers to offer libraries.

On the expense side, we have instituted the central editorial office to help decrease editorial expenses. There will be one editorial office serving all 6 journals. Most actions are automated electronically. The system implementation has been completed.

For FY2007, I expect we will hit our target budgets. Expect to see a full Treasurer's report in the March 2008 IMS Bulletin. The report will include final 2007 membership and subscription data as well as the FY07 audit and financial reports.

**Institute of Mathematical Statistics  
Budget 2007  
Revenue & Expense Statement**

	Actual 2003	Actual 2004	Actual 2005	Actual 2006	Estimated 2007	Budget 2007	Difference (1)	% Diff (2)
Revenue								
Membership dues and journal subs	\$ 312,793	\$ 357,657	\$ 355,253	\$ 329,646	\$ 312,655	\$ 345,000	\$ 32,345	9.38%
Institutional subscriptions	\$ 626,278	\$ 655,159	\$ 713,767	\$ 771,545	\$ 850,396	\$ 760,000	\$ (90,396)	-11.89%
Contributions	\$ 2,500	\$ 11,056	\$ -	\$ -	\$ 2,969	\$ -	\$ (2,969)	
Sales of back issues - Journals	\$ 5,418	\$ 8,789	\$ 6,548	\$ 5,314	\$ 5,156	\$ 3,000	\$ (2,156)	-71.87%
Page charges	\$ 23,249	\$ 19,500	\$ 39,422	\$ 34,412	\$ 19,100	\$ 32,000	\$ 12,900	40.31%
Sales of LNMS	\$ 28,012	\$ 30,540	\$ 24,303	\$ 21,951	\$ 21,459	\$ 30,000	\$ 8,541	28.47%
Sales - NSF-CBMS series	\$ 6,905	\$ 7,599	\$ 7,527	\$ 7,039	\$ 2,618	\$ 7,000	\$ 4,382	62.60%
Scientific Meetings	\$ 41,621	\$ 84,443	\$ 65,192	\$ 25,744	\$ 63,704	\$ 85,000	\$ 21,296	25.05%
Advertising	\$ 29,977	\$ 27,197	\$ 31,543	\$ 36,215	\$ 42,826	\$ 40,000	\$ (2,826)	-7.07%
Royalties & other	\$ 44,433	\$ 48,458	\$ 55,665	\$ 63,288	\$ 63,725	\$ 67,500	\$ 3,775	5.59%
Net profit of joint ventures	\$ (9,746)	\$ 20,656	\$ 42,599	\$ 26,097	\$ 10,000	\$ -	\$ (10,000)	
Investment Income	\$ 60,613	\$ 42,239	\$ 49,417	\$ 79,517	\$ 115,976	\$ 85,000	\$ (30,976)	-36.44%
Total revenue	\$ 1,172,053	\$ 1,313,293	\$ 1,391,236	\$ 1,400,768	\$ 1,510,584	\$ 1,454,500	\$ (56,084)	-3.86%
Expenses								
Production (schedule 1)	\$ 410,791	\$ 511,785	\$ 615,775	\$ 559,689	\$ 678,607	\$ 638,000	\$ (40,607)	-5.98%
Editorial (schedule 1)	\$ 208,852	\$ 208,341	\$ 241,333	\$ 256,687	\$ 250,140	\$ 260,500	\$ 10,360	4.14%
Functional Expenses (schedule 2)	\$ 552,024	\$ 601,433	\$ 649,839	\$ 684,998	\$ 712,895	\$ 705,400	\$ (7,495)	-1.05%
Total Expenses	\$ 1,171,666	\$ 1,321,559	\$ 1,506,947	\$ 1,501,374	\$ 1,641,642	\$ 1,603,900	\$ (37,742)	-2.30%
Revenues over expenses	\$ 387	\$ (8,266)	\$ (115,711)	\$ (100,606)	\$ (131,058)	\$ (149,400)	\$ 18,342	-14.00%

**Institute of Mathematical Statistics  
Budget 2007  
Revenue & Expense Statement**

**Schedule 1: Production & Editorial**

	Actual 2003	Actual 2004	Actual 2005	Actual 2006	Estimated 2007	Budget 2007	Difference (1)	% Diff (2)
Production expenses:								
Annals of Applied Probability	\$ 83,410	\$ 90,979	\$ 134,058	\$ 103,567	\$ 114,197	\$ 130,000	\$ 15,803	12.16%
Annals of Applied Statistics	\$ -	\$ -	\$ -	\$ -	\$ 23,000	\$ 40,000	\$ 17,000	42.50%
Annals of Probability	\$ 103,670	\$ 145,981	\$ 144,051	\$ 124,356	\$ 130,157	\$ 135,000	\$ 4,843	3.59%
Annals of Statistics	\$ 110,929	\$ 129,058	\$ 166,307	\$ 177,655	\$ 175,807	\$ 150,000	\$ (25,807)	-17.20%
Statistical Science	\$ 56,622	\$ 59,058	\$ 63,990	\$ 51,323	\$ 55,916	\$ 58,000	\$ 2,084	3.59%
IMS Bulletin	\$ 25,782	\$ 36,636	\$ 43,286	\$ 50,208	\$ 51,437	\$ 51,000	\$ (437)	-0.86%
Lecture Notes-Monograph Series	\$ 25,152	\$ 20,002	\$ 19,580	\$ -	\$ 40,673	\$ 20,000	\$ (20,673)	-103.37%
NSF-CBMS Series	\$ 5,225	\$ -	\$ 4,062	\$ 2,215	\$ -	\$ 5,000	\$ 5,000	100.00%
Electronic Journal of Statistics	\$ -	\$ -	\$ -	\$ -	\$ 2,607	\$ -	\$ (2,607)	
Probability Surveys	\$ -	\$ -	\$ 4,788	\$ 7,210	\$ 491	\$ 3,000	\$ 2,509	83.63%
Statistics Surveys				\$ -	\$ -	\$ 5,000	\$ 5,000	100.00%
Bernoulli	\$ -	\$ -	\$ -	\$ -	\$ 31,265	\$ -	\$ (31,265)	
Bernoulli News	\$ -	\$ -	\$ -	\$ -	\$ 2,000	\$ -	\$ (2,000)	
Electronic operations for all journals	\$ -	\$ 30,071	\$ 35,653	\$ 43,155	\$ 51,057	\$ 41,000	\$ (10,057)	-24.53%
Total production expenses	\$ 410,791	\$ 511,785	\$ 615,775	\$ 559,689	\$ 678,607	\$ 638,000	\$ (40,607)	-6.36%
Editorial expenses								
Annals of Applied Probability	\$ 19,964	\$ 7,315	\$ 6,000	\$ 2,926	\$ 847	\$ 2,000	\$ 1,153	57.65%
Annals of Applied Statistics	\$ -	\$ -	\$ -	\$ -	\$ 4,384	\$ 20,000	\$ 15,616	78.08%
Annals of Probability	\$ 10,176	\$ 6,284	\$ 5,464	\$ 3,588	\$ -	\$ 2,000	\$ 2,000	100.00%
Annals of Statistics	\$ 39,705	\$ 61,660	\$ 65,357	\$ 60,000	\$ 33,624	\$ 35,000	\$ 1,376	3.93%
Statistical Science	\$ 3,658	\$ 11,748	\$ 3,228	\$ -	\$ 2,128	\$ 2,000	\$ (128)	-6.40%
IMS Bulletin	\$ 29,043	\$ 32,595	\$ 49,801	\$ 66,620	\$ 72,690	\$ 68,000	\$ (4,690)	-6.90%
Central Editorial Office	\$ -	\$ -	\$ 10,000	\$ 6,600	\$ 11,000	\$ 7,500	\$ (3,500)	-46.67%
Web Editor	\$ 32,712	\$ 11,976	\$ 16,111	\$ 25,451	\$ 33,270	\$ 40,000	\$ 6,730	16.83%
Managing & production editors	\$ 73,594	\$ 76,763	\$ 85,372	\$ 91,502	\$ 92,197	\$ 84,000	\$ (8,197)	-9.76%
Total Editorial Expenses	\$ 208,852	\$ 208,341	\$ 241,333	\$ 256,687	\$ 250,140	\$ 260,500	\$ 10,360	3.98%

**Institute of Mathematical Statistics  
Budget 2007  
Revenue & Expense Statement**

**Schedule 2: Functional Expenses**

<b>Expenses</b>	<b>Actual 2003</b>	<b>Actual 2004</b>	<b>Actual 2005</b>	<b>Actual 2006</b>	<b>Estimated 2007</b>	<b>Budget 2007</b>	<b>Difference (1)</b>	<b>% Diff (2)</b>
Management Fee	\$ 131,776	\$ 131,885	\$ 141,362	\$ 137,008	\$ 134,351	\$ 138,000	\$ 3,649	2.64%
Salaries, payroll taxes & benefits	\$ 102,444	\$ 98,232	\$ 103,010	\$ 107,378	\$ 112,045	\$ 112,000	\$ (45)	-0.04%
Contracted services	\$ -	\$ -	\$ -	\$ -	\$ 16,115	\$ 36,000	\$ 19,885	55.24%
Mailing & shipping at Press	\$ 102,280	\$ 109,659	\$ 144,639	\$ 156,061	\$ 159,775	\$ 165,000	\$ 5,225	3.17%
Scientific Meetings	\$ 91,500	\$ 114,465	\$ 117,202	\$ 83,178	\$ 108,675	\$ 75,000	\$ (33,675)	-44.90%
Business Meetings	\$ 6,682	\$ 5,379	\$ 15,090	\$ 6,406	\$ 9,355	\$ 5,000	\$ (4,355)	-87.10%
Storage	\$ 10,093	\$ 11,684	\$ 12,152	\$ 6,209	\$ 8,605	\$ 6,000	\$ (2,605)	-43.42%
Postage & shipping at offices	\$ 27,426	\$ 29,896	\$ 26,986	\$ 27,887	\$ 25,282	\$ 28,000	\$ 2,718	9.71%
Rent & utilities	\$ 3,008	\$ 3,464	\$ 3,309	\$ 3,300	\$ 3,300	\$ 3,400	\$ 100	2.94%
Professional fees	\$ 17,920	\$ 17,010	\$ 18,460	\$ 19,008	\$ 18,300	\$ 19,000	\$ 700	3.68%
Electronic Development Projects	\$ -	\$ -	\$ -	\$ 35,349	\$ 34,387	\$ 21,000	\$ (13,387)	-63.75%
Computer equipment & software	\$ 2,020	\$ 4,792	\$ 5,126	\$ 1,862	\$ 2,973	\$ 9,000	\$ 6,027	66.97%
Insurance	\$ 17,026	\$ 21,780	\$ 21,579	\$ 21,629	\$ 21,834	\$ 22,500	\$ 666	2.96%
Supplies	\$ 2,101	\$ 3,109	\$ 2,422	\$ 868	\$ 656	\$ 3,000	\$ 2,344	78.13%
Printing	\$ 10,370	\$ 13,633	\$ 7,917	\$ 8,476	\$ 6,650	\$ 10,000	\$ 3,350	33.50%
Credit card fees	\$ 11,218	\$ 12,099	\$ 12,935	\$ 15,060	\$ 18,110	\$ 16,000	\$ (2,110)	-13.19%
Contributions to other organizations	\$ 6,163	\$ 6,362	\$ 7,057	\$ 8,601	\$ 8,082	\$ 8,500	\$ 418	4.92%
Telephone	\$ 2,132	\$ 1,384	\$ 1,976	\$ 1,936	\$ 1,135	\$ 2,000	\$ 865	43.25%
Office Expense	\$ 1,969	\$ 2,328	\$ 870	\$ 28,842	\$ 1,425	\$ 3,000	\$ 1,575	52.50%
Marketing, publicity, membership drives	\$ 5,896	\$ 14,272	\$ 7,747	\$ 15,940	\$ 21,840	\$ 23,000	\$ 1,160	5.04%
<b>Total Functional Expenses</b>	<b>\$ 552,024</b>	<b>\$ 601,433</b>	<b>\$ 649,839</b>	<b>\$ 684,998</b>	<b>\$ 712,895</b>	<b>\$ 705,400</b>	<b>\$ (7,495)</b>	<b>-1.06%</b>

(1) Difference = budget-estimate

(2) % Difference = (budget-estimate)/budget

## *Explanation of differences exceeding 10%*

### REVENUE

- **Institutional subscriptions:** are up due in part to an additional income from previous institutional members (see item above) which are now allocated in this line item. In addition, income from increased rates and Bernoulli subscribers for ½ year (IMS began providing sales to Bernoulli in CY2007, therefore ½ year of sales in this fiscal year. Overall total institutional subscriptions have remained stable this year.
- **Contributions:** This line item was not budgeted in FY2007. This includes donations to: Gift, LeCam, Open Access and Tweedie Funds.
- **Sales of back issues – Journals:** Higher sales than expected.
- **Page charges:** Lower page charge income in FY2007. This line item is difficult to predict and can vary considerably from year to year.
- **Sales of LNMS:** Lower sales than expected, due to late release of new issues in 2007. Income expected to increase for this item in FY2008.
- **Sales - NSF-CBMS series:** Lowest sales in many years due to no new volumes since 2005.
- **Scientific Meetings:** IMS handles income and expenses for several meetings. Typically it is unknown how many meetings will be handled when this line item is budgeted. IMS predicted handling two meeting in FY2007, however only handled one. Regardless, expenses are covered by income for individual meetings.
- **Net profit of joint ventures:** No funds were budgeted for this item.
- **Investment Income:** is up in FY2007 as increased interest rates on CDs and interest on investments in mutual funds and bonds.

### EXPENSES

#### Production

- **Annals of Applied Probability:** Movement to 6 issues in 2007, not as costly as expected.
- **Annals of Applied Statistics:** Two issues initially expected in FY2007, only one occurred.
- **Annals of Statistics:** Budgeted amount took into account decrease in page count which did not occur. Expenses in line with past page counts as expected.
- **Lecture Notes-Monograph Series:** Three issues to press in FY2007, only two budgeted. Also two issues were reprinted.

- **NSF-CBMS Series:** One issue budgeted for in FY2007, none printed.
- **Electronic Journal of Statistics:** Not budgeted in FY2007
- **Probability Surveys:** Expenses down in FY2007 due to our partner (BS) providing payment for 2 years of their PS share in FY2007. Expenses are also lower than expected.
- **Statistics Surveys:** No expenses for this journal yet.
- **Bernoulli and Bernoulli News:** When FY2007 budget was completed, we did not know that the BS would agree to have IMS publish these two items, so no funds were budgeted.
- **Electronic operations for all journals:** Higher than expected as Bernoulli and Bernoulli News added to this line item.

### **Editorial**

- **AAP, AOP, AOAS:** All using central editorial office. All expenses lower than budgeted to do minimal/no need for additional services.
- **Central Editorial Office:** Fees for CEO higher to accommodate Bernoulli.
- **Web Editor:** Less services used in FY2007 than expected. Some of these funds shifted into FY2008 as web update is completed.
- **Functional**
- **Contracted services:** For IT Project Manager and Administrative Contractor for ½ year. FY2007 budget was for full year but these positions were not filled until January 2007.
- **Scientific Meetings:** Expenses for travel for some special lectures, executive committee higher in FY2007 due to higher cost to travel to Rio. The Rio meeting itself came out even with income/expenses.
- **Business Meetings:** Expenses for travel to SFO for Exec Committee meeting, and one additional meeting for Executive Director higher than expected.
- **Storage:** Increase storage costs as we add Bernoulli and Bernoulli News, plus increased issues of AAP (6 issues per year, rather than previous 4) in storage.
- **Postage & shipping at offices:** Down slightly as we delayed the sending of paper dues invoices until after a large number of online dues had been paid.

- **Electronic Development Projects:** Higher than expected as presidential development funds used specifically for this item. Original budget is accurate. President has opportunity to allocate \$25K as they wish on development throughout their year. Dr. Pitman allocated much of his funds to this line item after the budget was approved.
- **Computer equipment & software:** Expected need to purchase 3 computers in FY2007, none were purchased. Funds will be reallocated to FY2008 for purchase of 2 computers.
- **Supplies:** Minimal supplies needed in FY2007.
- **Printing:** Down as we delayed the sending of paper dues invoices until after a large number of online dues had been paid.
- **Credit card fees:** Higher as a greater % of members opt to renew online. Savings experienced in printing/postage is essentially reallocated here.
- **Telephone:** Expenses down in FY2007.
- **Office Expense:** Lower than expected as credit card points were used to purchase holiday gifts for FASEB and contractors rather than funds.

(1) Difference = budget-estimate

(2) % Difference = (budget-estimate)/budget



## ECP editor's report on 2006

The number of submissions to ECP has increased in the year 2006 in comparison with previous years. A total of 93 papers were submitted (including transfers from EJP). Of those, 34 were accepted, 53 rejected and 6 are still in review process. This number will probably be higher in 2007, and by the mid june 2007, 55 papers have already been submitted to ECP.

In the 2006 volume, 34 papers have appeared. The time needed between submission and acceptance of these papers in final form is distributed as follows:

0-1 months:	2
2-4 months:	5
4-6 months:	7
6-8 months:	8
8-10 months:	4
10-12 months:	4
> 12 months:	4

Taking into account that ECP publishes short papers, the review time should be less than for other journals. However, as the above figures point out, we are still far from the ideal mean time of 3-4 months between submission and final acceptance. On the other hand, after the final acceptance, the publication takes only few days.

The policy of the electronic journals has been to reinforce the immediate rejection in case of papers that do not meet the high standards of quality. This procedure has been proved to be useful.

## **EJP: Editor's report on 2006**

The number of submissions to EJP increased drastically in the year 2006 compared to its history so far, namely up to 156 submissions.

The development so far seems to indicate that this very high number is stable, by the end of May, 2007 we have 60 submissions.

Unfortunately, the number of very good papers has not increased at this rate. As a consequence it was necessary to use the tool of immediate rejection based on the editor's judgement and very quick rejections after consulting with an associate editor but without a regular refereeing process. (This caused very emotional reactions by some authors but eventually everybody accepted the procedure as reasonable.) As a consequence the workload of the editor and the associate editors increased substantially and has forced two associate editors to quit and several others to limit the papers they handle during peak times of other responsibilities. Another observation is that many authors of short papers try to get their papers into EJP. During the year 2006, 26 manuscripts had to be shifted to ECP by the intervention of the EJP-editor.

These developments clearly show that there is a need for a further journal accepting papers which are correct, decently written but which do not satisfy the high standards for longer papers on the novelty of the methods used and can be accepted by the two Annals, PTRF or EJP.

**Confidential:** The journal had serious problems with one associate editor who was handling 6 papers from 2004 to 2005 who could only be handled recently. For this field another person has been appointed in the meantime. **End confidential**

For the year 2006 (i.e. submissions in that year) we had:

submissions:	156
accepted:	50
in revision:	7
pending:	15
transferred to ECP:	26
rejected:	56
withdrawn:	2

We increase the efforts to keep up higher standards (at a level with the Annals and PTRF), so that the acceptance rate will decrease somewhat in the time to come.

The time needed to produce a first report, respectively to decide on early rejection or transfer to ECP has the following distribution:

1 month:	48
2 months:	11
3 months:	9
4 months:	14
5 months:	20
6 months:	19
7 months:	8
8 months:	6
9 months:	8
10 months:	
11 months:	2
12 months:	1

Ideally the time for the first report should be below 6 months. It is a fact, however, that associate editors have to put in serious effort to convince people to take on a paper as a referee and handle it in reasonable time with a fair report. This requires, in particular, the writing of mails which cannot be automatically generated (and often even phone calls) and which is therefore quite time-consuming. For that reason I am not too optimistic that the statistics can be improved very much in a sustainable way if we keep insisting on a tight quality control.

ELECTRONIC JOURNAL OF STATISTICS  
ANNUAL REPORT  
May 2007

*Electronic Journal of Statistics* (EJS) is a new journal sponsored by the IMS and the Bernoulli Society. We have been in operation for 2 months, having had our first submission on March 23 2007. The current status of papers is as follows:

Active	14
Appeared	6
Declined	6

Thus we have averaged about 1 submission every other day. Our main challenge at the moment is sorting out some difficulties with the web system for handling papers. Some problems have already been fixed and we hope that the remaining problems will be fixed shortly.

Larry Wasserman  
Editor, *Electronic Journal of Statistics*

## Report from the JCGS Management Committee for IMS 2007

The JCGS Management Committee met at the JSM, August 2006. Here is a summary of the meeting.

- David Van Dyk began taking new manuscripts July 1, 2006. Luke Tierney will continue to handle existing manuscripts.
- JCGS was brought onto Allentrack July 1, 2006.
- Janet Wallace was hired as the Editorial Coordinator in April 2006, and helped David get Allentrack up and running.
- Susam Holmes became the new IMS representative on the committee.
- The budget is not balanced, due to the costs of hiring the new editorial coordinator, and this needs to be resolved by the joint owners, ASA, IMS and Interface.
- Double-blinding and increasing color were discussed. Color can be unlimited in electronic versions, but needs to be restricted in printed copy to control costs. Double-blinding is problematic. Luke doesn't force authors to blind software.
- Development of JCGS was discussed: special issues, new sections such as short letters, video submission.

Attachments: Editor's report 2006

Editor's Report to the JCGS Management Committee  
**Journal of Computational and Graphical Statistics**

Luke Tierney, Editor

August 4, 2006

After a bit of a dip in 2004 submissions in 2005 increased dramatically. Submissions for 2004 and 2005 were 120 and 176, respectively. As to June 30, when handling of new submissions was turned over to David van Dyk, we had received 83 submissions in 2006. The quality of accepted manuscripts continues to be quite high. We continue to publish about 45-50 papers per year. This reflects a success rate for unsolicited papers in the range of one quarter to one-third. The backlog of articles is currently about six months. Our median time to first review is 130 days.

The number of submissions where color would be useful continues to increase. While we can sometimes persuade authors to eliminate color this does often reduce the quality of the presentation. We have been able to limit color to 3-4 regular articles per year; it is likely that there will be about that many in 2007. It would be good to continue to pursue options for increasing the amount of color we can include in the journal.

The number of submissions on purely graphical topics remains rather low, though it has improved a little in the last year. This is an area where further developments and ideas are still needed.

There has been some change in the editorial board with four resignations and five additions by me; David van Dyk has added two more.

My editorial expenses for this year will consist of \$3,000 for computer support, mainly for reliably backed up disk space and web server support, the cost of attending the January Committee on Publications meeting, and the cost of the editorial board breakfast meeting at the JSM. I anticipate no further editorial expenses.

JSS is now an official electronic journal of the American Statistical Association. JCGS continues to publish titles and abstracts of papers published on line by JSS. It is probably reasonable to continue this, though it may make sense to no longer list the JSS editor on the JCGS masthead. At this point I believe there is no longer any formal relationship between JSS and JCGS, though it might be good to clarify this.

I am very pleased that David van Dyk has been selected and has agreed to become the next JCGS editor. I am also very glad to see that the level of support in terms of moving to AllenTrack and adding some editorial support is now more appropriate for the level of submissions JCGS now enjoys. Some care will be needed in balancing the amount of editorial support and its cost against the continued needs and associated costs of color publishing.

Editor's Report to the JCGS Management Committee  
**Journal of Computational and Graphical Statistics**

Luke Tierney, Editor

August 4, 2006

After a bit of a dip in 2004 submissions in 2005 increased dramatically. Submissions for 2004 and 2005 were 120 and 176, respectively. As to June 30, when handling of new submissions was turned over to David van Dyk, we had received 83 submissions in 2006. The quality of accepted manuscripts continues to be quite high. We continue to publish about 45-50 papers per year. This reflects a success rate for unsolicited papers in the range of one quarter to one-third. The backlog of articles is currently about six months. Our median time to first review is 130 days.

The number of submissions where color would be useful continues to increase. While we can sometimes persuade authors to eliminate color this does often reduce the quality of the presentation. We have been able to limit color to 3-4 regular articles per year; it is likely that there will be about that many in 2007. It would be good to continue to pursue options for increasing the amount of color we can include in the journal.

The number of submissions on purely graphical topics remains rather low, though it has improved a little in the last year. This is an area where further developments and ideas are still needed.

There has been some change in the editorial board with four resignations and five additions by me; David van Dyk has added two more.

My editorial expenses for this year will consist of \$3,000 for computer support, mainly for reliably backed up disk space and web server support, the cost of attending the January Committee on Publications meeting, and the cost of the editorial board breakfast meeting at the JSM. I anticipate no further editorial expenses.

JSS is now an official electronic journal of the American Statistical Association. JCGS continues to publish titles and abstracts of papers published on line by JSS. It is probably reasonable to continue this, though it may make sense to no longer list the JSS editor on the JCGS masthead. At this point I believe there is no longer any formal relationship between JSS and JCGS, though it might be good to clarify this.

I am very pleased that David van Dyk has been selected and has agreed to become the next JCGS editor. I am also very glad to see that the level of support in terms of moving to AllenTrack and adding some editorial support is now more appropriate for the level of submissions JCGS now enjoys. Some care will be needed in balancing the amount of editorial support and its cost against the continued needs and associated costs of color publishing.

## Probability Surveys Annual Report 2007

Volume 3 (2006) contained 10 papers (466 pages), a slight decrease over Volume 2. As of May 25 2007, Volume 4 contains 2 papers (145 pages) and 5 more papers are under review. The quality of published papers is pleasantly high, though increasing the number of submissions would be desirable.

Acceptance percentages are not comparable to those of other IMS journals for various reasons. Of papers formally submitted in 2006, there were 8 papers rejected as “more like new research than a survey paper”. Such rejections are generally made very quickly, directly by Editor or after consultation with an Associate Editor. I also receive (and welcome) informal enquiries about suitability of draft papers, which obviates later need for rejection of formal submissions.

David Aldous



## IMS Executive Editor's report

### Statistics Surveys

Jon A. Wellner

June 9, 2007

Since being appointed as IMS Executive Editor of **Statistics Surveys** in early February, 2007, I have recruited a group of twenty IMS - sponsored Associate Editors. The following people have volunteered to serve on the initial Editorial Board on behalf of the IMS:

---

Peter Bickel	John Marden
T. Tony Cai	Per Mykland
Noel Cressie	Dominique
Dorota Dabrowska	Donald Richards
Anirban DasGupta	Qi-Man Shao
Jianqing Fan	Xiaotong Shen
Edward George	Simon Tavaré
Subhashis Ghosal	Grace Wahba
Vladimir Koltchinskii	Yuhong Yang
Michael Kosorok	Cun-Hui Zhang

---

I have also been working with the Coordinating Editor, Wendy Martinez, to establish procedures and revise the website. Wendy and I have been working with Elja Arjas who has been appointed as the initial Executive Editor for **Statistics Surveys** from the *Bernoulli Society*. Elja has now appointed ten Associate Editors sponsored by the *Bernoulli Society*. Although we have not yet published any papers, about 10 manuscripts have been submitted and have been reviewed or are under review at this time. The IMS sponsored Associate Editors have been encouraged to solicit appropriate review and survey articles and we welcome submissions, both solicited and unsolicited. Our hope is to publish have about 400 pages published by the end of the year.