

IMS sponsored meeting

2015 ENAR/IMS meeting

March 15, 2015 – March 18, 2015 Miami, Florida

ENAR program chair: Mithat Gönen, Memorial Sloan Kettering Cancer Center

ENAR associate program chair: Brisa Sánchez, University of Michigan

IMS program chair: Lurdes Y.T. Inoue, University of Washing

2015 WNAR/IMS meeting

June 14, 2015 – June 17, 2015 Boise, Idaho, USA

2015 IMS-JSM meeting

August 8, 2015 – August 13, 2015 Seattle, Washington, USA

IMS program chairs : I. Pruenster and Antonio Lijoi

IMS contributed chair :

IMS co-sponsored meeting

Conference on Probability Theory and Combinatorial Optimization

March 14, 2015 – March 15, 2015, Durham, North Carolina, USA

The fourth workshop on biostatistics and bioinformatics

May 8, 2015 – May 10, 2015 Atlanta, Georgia, USA

Spring research conference (SPR, 2015)

May 20, 2015 – May 22, 2015 Cincinnati, Ohio, USA

9th conference on extreme values analysis (EVA)

June 15, 2015 – June 19, 2015 Ann Arbor, Michigan, USA

5th international workshop on sequential methodologies 2015

June 22, 2015 – June 24, 2015 New York, New York, USA

10th conference on Bayesian nonparametrics

June 22, 2015 – June 26, 2015 Raleigh, NC, US

2015 workshop on finance, insurance, Probability and statistics (FIPS, 2015)

June 25, 2015 – June 27, 2015 New Brunswick, New Jersey, USA

2015 IMS-China international conference on statistics and probability

July 1, 2015 – July 4, 2015 Kunming, Yunnan, P. R. China

INFORMS applied probability society conference 2015

July 5, 2015 – July 8, 2015 Istanbul, Turkey

International symposium in statistics (ISS) 2015 : parametric and semiparametric inferences for spatial temporal and multidimensional familial longitudinal data

July 6, 2015 – July 8, 2015 St. John's, Canada

EMS : European meeting of Statistics, 2015

July 6, 2015 – July 10, 2015 Amsterdam, Netherlands

Biosciences, Medicine and novel nonparametric methods

July 12, 2015 – July 15, 2015 Graz, Austria

Research workshop and conference on statistical methods in finance

July 13, 2015 – July 17, 2015 Chennai, India

38th conference on stochastic processes and their applications

July 13, 2015 – July 17, 2015 Oxford, United Kingdom

Statistics and exoplanets

August 3, 2015 – August 5, 2015 Honolulu, Hawaii, USA

NISS/ASA/IMS writing workshop for young researchers

August 8, 2015 – August 13, 2015 Seattle, Washington, USA

Appointments of chairs for the IMS sponsored meetings

JSM 2016 (Chicago, July 30 - August 4, Chicago, IL, USA)

- 1 Program Chair : Jan Hannig
- 1 contributed program chair : Alexander Aue

ENAR 2016 Spring Meetings, March 6-9, 2016, Austin, TX1

Program Chair : Babak Shahbaba

medallion lectures

T. Gneiting who is a medallion lecture 2014, and was schedule to give his lecture at WNAR 2014 had to postpon for personal reasons and was supposed to be giving his lecture at ENAR 2015. Unfortunately he was still unable to attend. Lurdes Inue tried very hard to arrange something but it didn't work. So his lecture needs to be postponed to 2016 – presumably ENAR

Treasurer's Report 2014

Introduction

Jean Opsomer, IMS Treasurer, writes:

This report details membership and subscription data for calendar year end 2014. The 2014 fiscal year end audit report will be published separately in the Fall of 2015 after the auditors have completed the annual process.

In 2014, the total number of IMS paid members decreased, but the total number of members increased. Subscriptions by institutions also decreased this past year. The financial status of the Institute continues to be stable, and actions have been taken to ensure its long-term stability. Details of the events of the past year and membership, subscription and sales data, are given below.

Publications

The following is a list of all current IMS core, co-sponsored, affiliated and supported journals:

IMS Core Print/Electronic Publications

Annals of Probability; Annals of Applied Probability; Annals of Statistics; Annals of Applied Statistics; Statistical Science; Current Index to Statistics; IMS Collections; IMS Monographs; IMS Textbooks; IMS Bulletin

Co-Sponsored Print/Electronic Publications

Electronic Communications in Probability; Electronic Journal of Probability; Electronic Journal of Statistics; Journal of Computational and Graphical Statistics; NSF-CBMS Series in Probability and Statistics; Probability Surveys; Statistics Surveys

Supported Publications

Annales de l'Institut Henri Poincaré (B); Bayesian Analysis; Bernoulli; Bernoulli News; Brazilian Journal of Probability and Statistics; Stochastic Systems

Affiliated Publications

ALEA: Latin American Journal of Probability and Mathematical Statistics; Probability and Mathematical Statistics

Membership Data

Total individual paid membership in the Institute as of December 31, 2014 decreased 4.9% from December 31, 2013. Table 1 (below) presents the membership data back to 2007.

TABLE 1: Membership, by Calendar Year

	2007	2008	2009	2010	2011	2012*	2013	2014	% change
Regular	2,266	2,179	2,045	1,970	1,863	1,792	1,737	1,616	-7.0%
Life/Retired Life	327	402	455	477	495	498	501	516	3.0%
Reduced Country/Retired/IMS China	430	633	606	399	401	395	369	364	-1.4%
New Graduate	129	122	158	149	113	112	110	87	-20.9%
Student	1,160	1,328	1,368	1,160	1,116	1,023	1,036	1,187	14.6%
Total	4,312	4,664	4,632	4,155	3,988	3,820	3,753	3,770	0.5%
Total excluding free members (students, and in 2008–9 IMS China)	3,152	3,156	3,084	2,995	2,872	2,797	2,717	2,583	-4.9%

* 2012 member figures contain some estimates

As can be seen, the paid membership reached a high of 3,156 in 2008 and has been decreasing since then. This trend is similar to that of other professional societies. Nevertheless, this is clearly an area of concern, and the IMS Executive Committee continues to look for ways to address this issue.

Geographic Distribution of Members: The IMS membership is currently distributed as follows: 62% United States; 18% Europe; 11% Asia; 4% Canada; 3% Australia and New Zealand; <2% South America, Mexico and the Caribbean; <1% Africa.

Selection of Journals by Members: Print subscriptions by members continued to decrease in 2014, as expected, because members are opting to reduce their use of print while enjoying free electronic access to all journals. Members are charged actual cost for print copies of journals, so there is no net loss or gain to the bottom line from changes in print subscriptions by members. Table 2 (overleaf) shows the current selection of journals by members.

The IMS offers joint membership opportunities with the following societies:

- Bernoulli Society (BS);
- International Statistical Institute/Bernoulli Society (ISI/BS);
- International Society for Bayesian Analysis (ISBA);
- Applied Probability Society/INFORMS (APS/INFORMS);
- Sociedad Latino Americana de Probabilidad y Estadística Matemática (SLAPEM).

Institutional Subscription Data

Table 3 (overleaf) presents comparative subscription data for institutions to each of our scientific journals for 2014 and previous years. Almost all journals experienced subscription decreases in 2014. Overall institutional subscriptions decreased by 4.8%. The decrease to IMS journals, specifically, was 3.1%. We are seeing increases in our bundled offerings which are discounted on the whole. Approximately 60% of the non-member subscribers to IMS journals are in USA and Canada, with the remaining subscribers distributed throughout the world.

Book Sales Data

Tables 4 and 5 (overleaf) present sales data for all the IMS book series. In 2010 IMS published its first volumes in a cooperative arrangement with Cambridge University Press to publish two series, *IMS Monographs* and *IMS Textbooks*. Sales of these volumes are going very well.

Continues on **page 14**

Treasurer's Report continued

The *CBMS-NSF Regional Conference Series* published no new volumes in 2014. The *IMS Collections* series has seen very low sales, and has been formulated in order for the IMS to have minimal loss on these volumes. The *Lecture Notes–Monograph Series* ceased publication in 2009.

Financial and Audit Report

The fiscal year ended December 31, 2014.

The external audit of the IMS will be completed in July 2015. The full audit report will appear in the *IMS Bulletin* in the Fall.

Conclusion

The IMS Executive Committee has reviewed all data in this report. A long-term financial plan is already in place and the IMS continues to be strong and stable financially. The decrease in institutional subscriptions is being felt across the market and is not unexpected. The IMS leadership began planning for these decreases over 10 years ago and has ensured that IMS resources are shored up to protect the long-term stability and growth of the society.

Jean Opsomer, Treasurer

TABLE 2: Member** subscriptions, by calendar year

PRINT (paid)	2007	2008	2009	2010	2011	2012	2013	2014	% change
AAP	497	428	382	280	197	126	84	100	19.0%
AOP	534	481	416	298	218	184	99	108	9.1%
AOAS	n/a	1,160	1,089	714	480	379	232	171	-26.3%
AOS	1,608	1,323	1,109	763	555	447	265	284	7.2%
STS	2,146	1,880	1,680	1,310	1,035	869	532	534	0.4%
Total	4,785	5,272	4,676	3,365	2,485	2,005	1,212	1,197	-1.2%

** Previously this information was reported as all members (including organizational), however data has been reformatted to show individual members only, to reflect the change in classification and to better view the current status of the data.

TABLE 3: Institutional paid subscriptions, by calendar year

PRINT	2007	2008	2009	2010	2011	2012	2013	2014	% change
AAP	700	636	680	684	645	687	632	600	-5.1%
AOP	977	900	948	967	901	908	839	795	-5.2%
AOAS	n/a	174	247	320	331	380	342	346	1.2%
AOS	1,227	1,118	1,154	1,158	1,127	1,132	1,008	985	-2.3%
STS	976	865	890	899	861	865	769	753	-2.1%
Bulletin	275	174	176	166	142	128	169	102	-39.6%
CIS	n/a	295	297	267	273	249	229	216	-5.7%
AIHP ^s	[174]	228	271	286	289	326	324	297	-8.3%
Bernoulli ^s	199	198	264	278	280	321	307	292	-4.9%
BIPS ^s	n/a	n/a	64	78	88	117	119	124	4.2%
Total	4,354	4,588	4,991	5,101	4,966	5,001	4,738	4,510	-4.8%
Total IMS journals	3,880	3,693	3,919	4,028	3,865	3,888	3,590	3,479	-3.1%

^s denotes IMS-supported journals. Numbers in [brackets] are prior to journal becoming IMS-supported.

TABLE 4: Total sales from the NSF-CBMS Regional Conference Series, the Lecture Notes–Monograph Series, and IMS Collections

	to 2007	2008	2009	2010	2011	2012	2013	2014	TOTAL
Total NSF-CBMS sales (8 volumes)	5,854	108	57	108	57	13	40	12	6,249
Total LNMS sales (58 volumes)	27,587	454	235	297	124	40	9	19	28,765
Total IMS Collections sales (10 volumes)	n/a	n/a	9	3	5	3	7	4	31

TABLE 5: Total sales of IMS Monographs [M] and IMS Textbooks [T]

Book, volume, year published	to 2007	2008	2009	2010	2011	2012	2013	2014	TOTAL
M1: Large-Scale Inference (2010)			n/a	660	586	789	556	358	2650
M2: Nonparametric Inference on Manifolds (2012)			n/a	n/a	n/a	299	19	52	370
M3: The Skew-Normal and Related Families (2013)			n/a	n/a	n/a	n/a	29	283	312
M4: Case-Control Studies (2014)			n/a	n/a	n/a	n/a	n/a	353	353
T1: Probability on Graphs (2010)			n/a	639	491	326	249	180	1885
T2: Stochastic Networks (2013)			n/a	n/a	n/a	n/a	387	439	826
T3: Bayesian Filtering and Smoothing (2014)			n/a	n/a	n/a	n/a	n/a	408	408
T4: Noise Sensitivity of Boolean Functions (2014)			n/a	n/a	n/a	n/a	n/a	60	60
T5: Surprising Mathematics of Longest Increasing Subsequences (2014)			n/a	n/a	n/a	n/a	n/a	6	6
Total Monographs & Textbooks sales	n/a	n/a	n/a	1,299	1,077	1,115	1,240	2,139	6870

AAP Annual Report, June 23, 2015

Timo Seppalainen, Editor

1. SUBMISSIONS

These are the recent annual numbers of submissions:

2014	332
2013	332
2012	310
2011	326
2010	295

2015 submissions are coming in at the same rate as last year: 144 in January-May 2015, exactly as in 2014.

Status of the 2013 submissions as of 2015-06-23:

Unfinished but beyond first review round	8
Accepted	79
Rejected	215
Rejected with resubmission	22
Withdrawn	8
<hr/>	
Total	332

If the remaining 8 submissions are accepted, as is possible and maybe likely, the 2013 acceptance rate will be $87/332 = 26\%$.

Status of the 2014 submissions as of 2015-06-23:

Still in first round of review	19
Second round or beyond or waiting for revision	33
Accepted	37
Rejected	210
Rejected with resubmission	25
Withdrawn	8
<hr/>	
Total	332

2. BACKLOG

A year ago the AAP backlog was such that accepted papers had to wait over 1.5 years for publication. To lower the backlog, in 2015 AAP will publish 3900 pages instead of the usual 2600 pages.

The backlog grows because year after year more papers are accepted than published. Here is a comparison between the number of papers accepted and published in a given year.

2010	81 papers accepted,	74 published
2011	80 papers accepted,	71 published
2012	78 papers accepted,	75 published
2013	82 papers accepted,	77 published

It has been the intention of the current editor to test whether we can bring the number accepted in line with the number published, just by nudging the AEs to be a little more careful about the papers accepted for publication. Acceptances of 2014 submissions seem to be running below those of 2013 submissions a year ago. (In the May 2014 report 77 2013 submissions had made it beyond a first report and 196 had been rejected. Today 70 2014 submissions have made it beyond a first report and 210 have been rejected.) Time will tell whether AAP can naturally fit within about 75 papers per year, or whether IMS should consider a permanent increase in its size.

3. BOARD OF ASSOCIATE EDITORS

Elchanan Mossel joined the board in January 2015. No other changes happened in the board during the past 12 months.

The current editorial board (38): David Anderson, Erwin Bolthausen, Mireille Bossy, Amarjit Budhiraja, Zhen-Qing Chen, Francois Delarue, Ron Doney, Randal Douc, Rick Durrett, Andreas Eberle, Patrik Ferrari, Luiz Renato Fontes, Peter Friz, Giambattista Giacomini, Carl Graham, Ramon van Handel, Alexander Holroyd, David Hobson, Remco van der Hofstad, David Levin, Vlada Limic, Eyal Lubetzky, Jean Mairesse, Jean-Francois Marckert, Elchanan Mossel, Soumik Pal, Mathew Penrose, Philip Protter, Kavita Ramanan, Brian Rider, Sebastien Roch, Chris Rogers, Mete Soner, Prasad Tetali, Nizar Touzi, Benedek Valko, Anton Wakolbinger, Jianfeng Zhang.

4. EJMS

EJMS appears to be working to satisfaction. All but one associate editor are fully on board using it. Kristina Mattson and Elyse Gustafson provide unfailing and timely help whenever called upon.

2014 ANNUAL REPORT FOR THE *ANNALS OF APPLIED STATISTICS*

STEPHEN E. FIENBERG, EDITOR-IN-CHIEF

The current Editorial Board for the *Annals of Applied Statistics* (AOAS) is as follows:

Stephen E. Fienberg Editor-In-Chief

Edoardo Airoldi	Editor for computational biology and machine learning
Tilmann Gneiting	Senior Editor
Beth Ann Griffin	Editor for social sciences, biostatistics and policy
Karen Kafadar	Editor for biology, medicine, and genomics
Brendan Murphy	Editor for social sciences and government
Nicoleta Serban	Editor for physical science, engineering, and the environment

The Area Editors continue to oversee the bulk of the manuscript review and are responsible for the continued high quality of the papers we publish in AOAS. Susan Paddock, who had previously served as Area Editor for social science, government, and economics, worked closely with us to deal with resubmissions of papers she had handled earlier in that capacity. Our outstanding board of Associate Editors has worked hard to ensure that submissions are reviewed in a timely fashion and that authors receive clear and helpful commentary on their manuscripts. I thank everyone involved with the editorial process, including our many reviewers, for their contributions.

The IMS Council recently approved the appointment of Tilmann Gneiting for a three year term as Editor-in-Chief beginning in January 2016. Tilmann has been a stellar member of the editorial board over an extended period of time and I anticipate a very smooth transition when he assumes the responsibilities of Editor-in-Chief at the end of 2015.

This past year marked the 9th full year of operation for AOAS. Submissions continued to relatively stable although down slightly from the preceding year. The yearly totals are as follows:

TABLE 1. AOAS Submissions by Year

Year	2007	2008	2009	2010	2011	2012	2013	2014
No. Submissions	286	274	352	418	468	472	494	462

Date: June 2015.

As I have remarked each year I have prepared my annual report, one of the selling points to authors for AOAS is the relatively short time required for review of a paper. For the papers submitted in 2014, just about 63% of all submissions received a decision within 3 months (down from 69% the previous year) and 35% within a week of submission (down from 36% the previous year). Here is a more detailed summary of the time to first decision with comparable figures for 2013:

TABLE 2. Review Time to Initial Decision

No. Days to First Decision	≤ 7	8-30	31-90	91-180	≥ 181	Total
2013	179 36%	42 9%	117 24%	124 25%	33 7%	494
2014	163 35%	30 6%	102 22%	107 23%	60 13%	462

There is a worrisome shift here with a very substantial number of papers taking 6 or more months in review. We are currently making a concerted effort to reduce the time in the review across the board and to eliminate these embarrassing stragglers.

As always, I am personally indebted to both Elyse Gustafson and Geri Mattson for their consistently generous support of the journal's operations. Geri in particular helps make our arrangement with EJMS fully functional, and is always available when we need assistance. Patrick Kelly continues to do a superb job of copy-editing and oversight of the production of AOAS with Geri.

The Annals of Probability

Prepared by Maria Eulalia Vares

Period of the report: January 1 to June 4, 2015

During this period, the Annals of Probability received 160 submissions. About the decisions: 1 acceptance, 58 rejections (including 3 rejections with resubmission) and 8 withdrawals. Our default refereeing time is six months. In particular, most accepted papers for AOP during the period were handled by previous editor, Krzysztof Burdzy. (This report does not contain numbers about the papers processed by K. Burdzy.)

AOP will publish 3600 pages in 2015. This includes 600 extra pages that have been approved early this year. With respect to the traditional 2400 pages per year, there was a previously decided addition of 600 pages, approved during the year 2014. After the assignments for issue 43(5), the current number of pages in the AOP backlog files is around 3200. As we progress in the work, it will be possible to consider the possibility of going back to the traditional number of pages. For the moment, 3000 per year looks a good option.

I learned from K. Burdzy that the memorial issue to honor of Donald Burkholder is planned to appear in 2016.

Maria Eulalia Vares
editor

The Annals of Statistics, 2014 Annual Report

Peter Hall and Runze Li, Editors

SUBMISSIONS: We received 697 submissions in 2014, a record high relative to the historical norm (in comparison to 323, 343, 397, 479, 490, 505, 532, 502, 555, 607 submissions in 2004–2013, respectively). Our editorial policy continues to emphasize that The Annals of Statistics aims at publishing research papers of highest quality, reflecting the many facets of contemporary statistics, including all mathematical, methodological, computational and interdisciplinary work. An overview of the data is given in Figure 1.

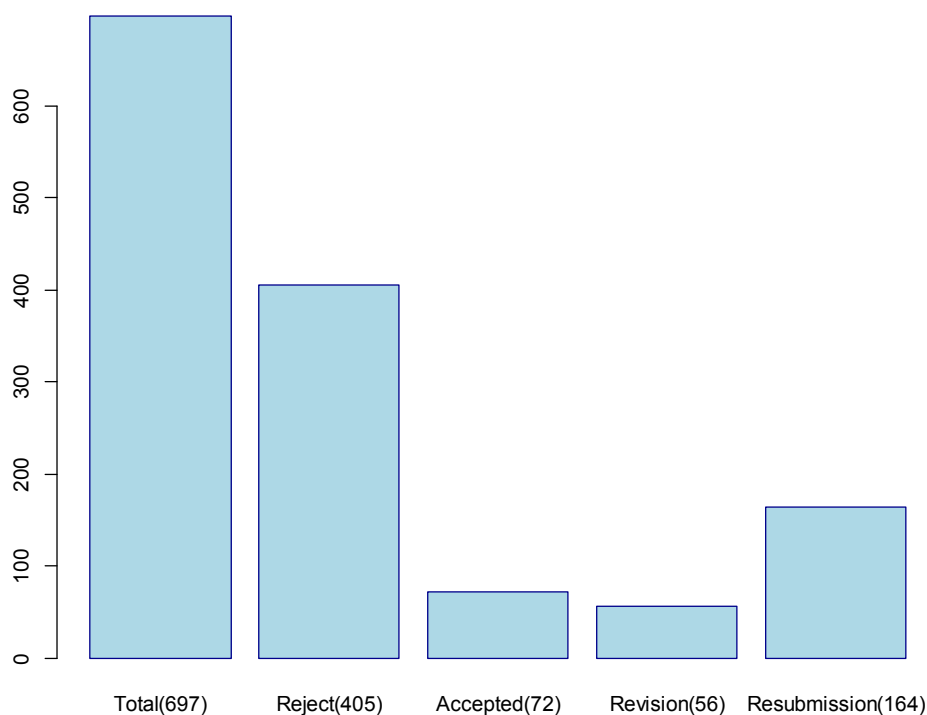


Figure 1: *Submissions in 2014.*

ACCEPTANCE RATE: During 2014, we accepted 72 papers, rejected 405, handled 56 requests for revision (major and minor) and rejected 164 papers with encouragement to resubmit. The acceptance rate among these 697 papers is 10.33% (11.70% in 2013, 17.76% in 2012, 15% in 2011). Note that this is not the acceptance rate among the manuscripts submitted in 2014.

BACKLOG: During 2014, we printed 2585 pages (3110 pages in 2013, 3175 pages in 2012, 3443 pages in 2011). In 2015 we expect to use at most an allotment of 3600 pages. Currently, there is no backlog.

PAGE REQUEST: We request an allotment of 3600 pages for 2016.

REVIEW TIMES: The quartiles of the distribution of the initial decision times for manuscripts submitted in 2014 are 1 day, 55 days and 115 days. The corresponding quartiles from 2013 are 2 days, 59 days and 108 days. The details of the review times are summarized in Figure 2, which provides an estimated survival curve of initial decision time for submissions in 2014. Figure 3 provided an estimated survival function of the second decision time for submission in 2014.

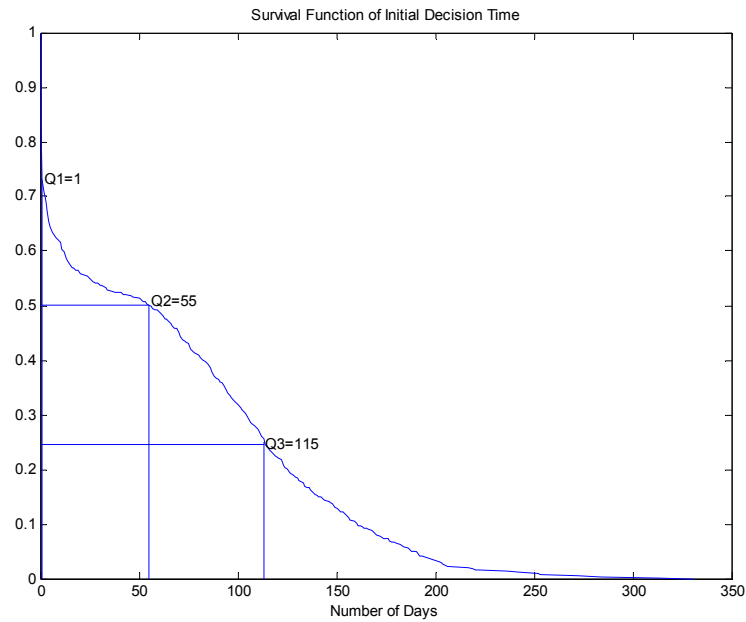


Figure 2: *Survival Function of Initial Decision Time*

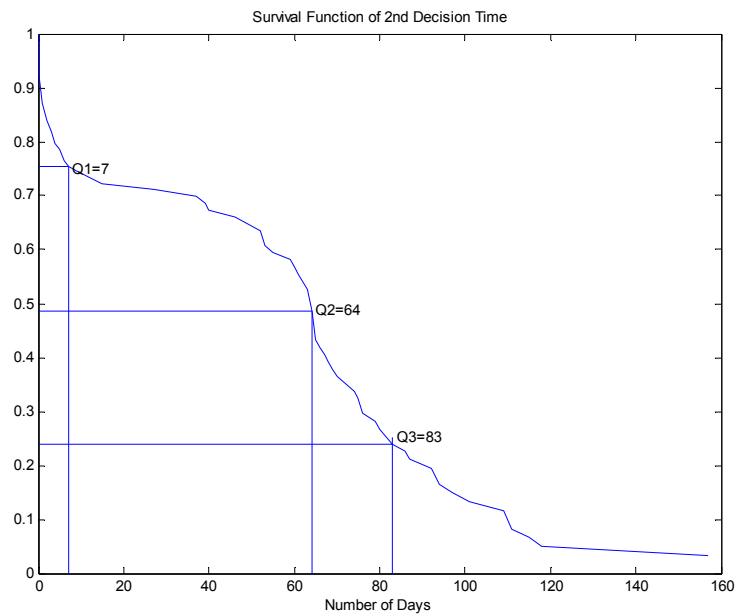


Figure 3: *Survival Function of 2nd Decision Time*

Annual Report - *Statistical Science*

Peter Green, Editor

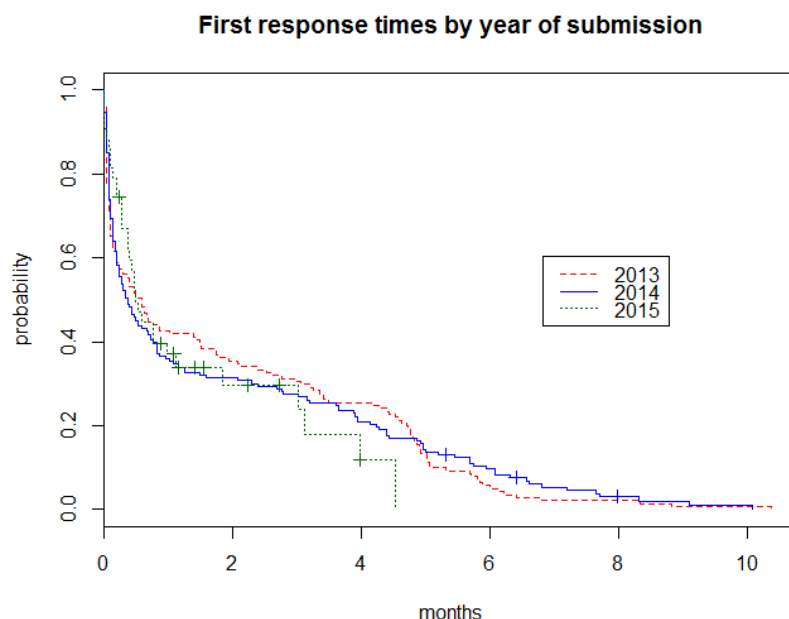
June 2015

As of 4 June 2015, 29 manuscripts were at various stages of review (19) or revision (10) for *Statistical Science* (4 of these have been back with authors for over 18 months, and could probably be discounted). From 1 June 2014 – 31 May 2015, 142 manuscripts were submitted; of these, 107 have been rejected, 20 are still in various stages of review or revision, and 15 have been accepted. The following table shows this information broken down by month of submission.

Month	Received	Rejected	In review or revision	Accepted
June 2014	13	8	0	5
July	14	12	1	1
August	16	15	1	0
September	13	13	0	0
October	17	12	3	2
November	10	9	1	0
December	16	10	1	5
January 2015	9	7	2	0
February	8	4	2	2
March	9	7	2	0
April	11	8	3	0
May	6	2	4	0
Total	142	107	20	15

Compared to the previous year, these figures show a steady rate of submission but much higher rejection and lower acceptance rates. The current lack-of-backlog is a source of some concern, which I am urgently trying to address.

Here is a Kaplan-Meier plot of the times from submission to first decision, by year of submission – 50% of responses made within 1 month, 80% within 4-5 months:



Following the pattern of recent years established by my predecessors Jon Wellner, Ed George and David Madigan, *Statistical Science* makes a feature of special projects of various kinds, including coordinated publication of articles on a common theme, and discussion (with rejoinder) of selected articles where the likely breadth of interest in the topic, and the diversity of opinion about it, seems to justify it.

A major special issue on “Semiparametrics and causal inference” edited by Thomas Richardson and Andrea Rotnitzky appeared at the end of 2014 (Volume 29). In 29(3) we published a discussion on instrumental variables, and in 30(2) one on multivariate cross-covariance functions, based on papers by Guido Imbens and by Marc Genton and William Kleiber, respectively. A special issue on mark-recapture is well under way (but the papers do not yet show in the table above), issues on modelling infectious disease and on survey sampling are at the planning stage, and some other ideas are in the pipeline.

Volume 29 (2014) of *Statistical Science* contained 734 pages (I am grateful to Council for the additional page allowance that permitted all of the “Semiparametrics and causal inference” special issue to appear in one number.) I expect that the total manuscript pages for 2015 will be close to 600, and I am requesting the same number of pages for 2016.

I am very grateful to both Mattson Publishing Services and VTeX, who continue to be very responsive to the needs of *Statistical Science*. EJMS provides a fine platform for journal management. The present Editorial Board is doing a wonderful job, both in the regular work of managing the review process and as a source of advice for the Editor. I am very grateful to all of the members, both those I have recently recruited to the Board: Jiahua Chen, Eric Tchetgen Tchetgen, and Yee Whye Teh and those longer-standing members who have continued to give valuable service: Rong Chen, Rainer Dahlhaus, Peter Diggle, Robin Evans, Michael Friendly, Ed George, Peter Hoff, David Madigan, Peter Mueller, Sonia Petrone, Nancy Reid, Glenn Shafer, Michael Stein, Jon Wakefield, Guenther Walther, Martin Wells, and Tong Zhang.

I receive invaluable advice and admin support from Elyse Gustafson, the background labours of Patrick Kelly, Geri Mattson and Michael Phelan are much appreciated, and I particularly acknowledge the frequent and helpful assistance of Kristina at Mattson and Saulius Kurklys at VTeX, key players in the editorial and production processes.

IMS Managing Editor's Report

Probability and Statistics

T. N. Sriram

July 2015

The printed pages for the 2014 issues of the five IMS journals are given in Tables 1 to 5 below: 2,643 for the *Annals of Probability*, 2,641 for the *Annals of Applied Probability*, 2,480 for the *Annals of Statistics*, 2,565 for the *Annals of Applied Statistics*, and 731 for the *Statistical Science*. The tables also give all the available information for the 2015 issues of each of the five journals. Note that the total printed pages in Volume 42 of the *Annals of Probability* was 1,783 pages lesser than that in Volume 41. Likewise, the total printed pages in Volume 42 of the *Annals of Statistics* was 629 pages lesser than that in Volume 41. The total printed pages for the 2014 volumes of the rest of the three journals were similar to those of the 2013 volumes.

Table 1: Annals of Probability

Volume 42	2014 Printed Pages	Volume 43	2015 Printed Pages
No. 1	430	No. 1	434
No. 2	434	No. 2	499
No. 3	432	No. 3	642
No. 4	472	No. 4	627
No. 5	438	No. 5	654
No. 6	437	—	—
TOTAL	2,643	TOTAL	2,856

Table 2: Annals of Applied Probability

Volume 24	2014 Printed Pages	Volume 25	2015 Printed Pages
No. 1	448	No. 1	428
No. 2	449	No. 2	649
No. 3	430	No. 3	649
No. 4	438	No. 4	653
No. 5	439	No. 5	650
No. 6	437	—	—
TOTAL	2,641	TOTAL	3,029

Table 3: Annals of Statistics

Volume 42	2014 Printed Pages	Volume 43	2015 Printed Pages
No. 1	412	No. 1	466
No. 2	405	No. 2	469
No. 3	312	No. 3	454
No. 4	459	No. 4	474
No. 5	447	—	—
No. 6	445	—	—
TOTAL	2,480	TOTAL	1,863

Table 4: Annals of Applied Statistics

Volume 8	2014 Printed Pages	Volume 9	2015 Printed Pages
No. 1	647	No. 1	546
No. 2	632	No. 2	555
No. 3	639	—	—
No. 4	647	—	—
TOTAL	2,565	TOTAL	1,101

Table 5: Statistical Science

Volume 29	2014 Printed Pages	Volume 30	2015 Printed Pages
No. 1	163	No. 1	146
No. 2	157	No. 2	149
No. 3	135	No. 3	146
No. 4	276	—	—
TOTAL	731	TOTAL	441

***IMS Bulletin* Report to Council 2014**

The *IMS Bulletin*, published 8 times per year, is the news organ of the institute. Our aim is to bring IMS members (and other readers) news about IMS activities and members, and items of interest to statisticians and probabilists around the world. Anirban DasGupta (Purdue University, USA) is in his second year as Editor (his term is January 2014–December 2016). Tati Howell (London, UK) is Assistant Editor.

We have an active international team of Contributing Editors: Robert Adler, Peter Bickel, Stéphane Boucheron, David Hand, Vlada Limic, Xiao-Li Meng, Dimitris Politis, Terry Speed and Hadley Wickham. Since the last report we have featured columns from all of them, with between one and three appearing in each issue. We are grateful to all of them for writing stimulating and thoughtful articles. We published an invited column from Dominique Picard, a series of preview articles on the IMS Wald, Le Cam and Medallion lectures, and reports from meetings around the world.

We invite responses from readers to these columns, and other articles, in the Bulletin's website, <http://bulletin.imstat.org>. The website is maintained by Tati, who uploads the news items and articles from the front section of each issue, just after the issue has gone to the printers (hence a couple of weeks before the print copies are mailed out). At the time of writing there are 417 articles posted, which collectively have received 151 comments. We would welcome more! Google Analytics reports 35,711 “sessions” by 28,335 users in the past year (an increase of 82% on the previous 12-month period). The number of visitors tends to peak towards the end of each month, coinciding with the monthly eBulletin emailed out to all members that contains a link to the latest issue: clearly some members are accessing IMS news in this way. We also post on the IMS Facebook page when issues are released, and link to some news items directly (<https://www.facebook.com/IMSTATI>). We have 1,809 “Likes” on Facebook at the time of writing (up from 202 last year).

In the past year, we have published obituaries (or sometimes notices, while obituaries are being sought) for: Witold Klonecki, H.A. David, Susie Bayarri, Laurent Cavalier, Jagdish Rustagi, Jim MacQueen, Steven F. Arnold, Eugene Dynkin, Moshe Shaked, Henry Teicher, Marvin Zelen, P.V. Rao, Bob Hogg, Kathryn Chaloner, Evarist Giné, Gopinath Kallianpur and Bruce Lindsay. If you have missed any of these, you can find them on the Bulletin's website at <http://bulletin.imstat.org/category/obituary/>. Thank you to those who have remembered to pass on the news that an IMS member or fellow has died, so that we can arrange for an obituary to be written.

We still publish lists of recent papers, rotating around IMS core, co-sponsored and supported journals (including electronic journals).

The Student Puzzle Corner, set by Anirban, has received some attention from student members. We congratulate Peng Ding, Colman Humphrey, Yixin Wang (twice!), Tengyuan Liang, and Vivian Meng, who submitted correct – and often elegantly written – solutions.

As ever, we invite all members, and particularly Council members, to be proactive in writing or soliciting articles. And if you have any comments, suggestions or feedback, please email bulletin@imstat.org or leave a comment on our blog.

*Anirban DasGupta & Tati Howell: bulletin@imstat.org
June 2015*

Report on *Electronic Journal of Probability*

(for the period July 2014 - June 2015)

EJP/ECP Editorial Board

The current joint EJP/ECP Editorial Board (appointed January 2015) consists of:

Louigi Addario-Berry*, Nathanael Berestycki*, Noam Berger, Djalil Chafaï (also Managing Editor), Julien Dubedat, Giambattista Giacomini*, Massimiliano Gubinelli, Antti Knowles*, Vladimir Koltchinski, Claudio Landim*, Malwina Luczak, Annie Millet, Leonid Mytnik, Hirofumi Osada, Sandrine Pécché (Chief Editor, ECP), Gábor Pete*, Peter Pfaffelhuber*, Alejandro Ramirez, Firas Rassoul-Agha*, Brian Rider (Chief Editor, EJP), Victor Rivero*, Peter Tankov*, Josef Teichmann, Feng-Yu Wang,

with additional general/technical support provided by Krzysztof Burdzy and Jim Pitman.

Note too that the previous EJP and ECP Chief Editors, Michel Ledoux and Anton Bovier, have agreed to remain on board in order to handle the submissions from their terms which are still active.

Those board members whose names are decorated with a * are newly appointed as of January 2015, and the remaining are in their second three year term. With this, S. Pécché and I have followed the recommendation of our predecessors that (approximately) half of the board be refreshed at the beginning of each incoming Chief Editor(s) term. One result of this would be that Associate Editors would stay on the board for (at most) two three-year terms (as in the case at AOP, for example). This seems eminently sensible, and I suggest that the joint IMS-Bernoulli committee move to make this a rule going forward.

OJS managing system

The OJS managing system from PKP is by now well established, and continues to work quite well. The Associate Editors are able to use it efficiently and authors appear to navigate the tasks of submissions, revisions, etc. without difficulty.

Indeed, the only issues I've seen arise in the first half of 2015 have been caused by own customary ineptitude with any sort of technology. Happily, in these moments we have

Djalil Chafai in place as Managing Editor who does just a remarkable job, not only in helping the editors and authors with the system, maintaining statistics of both journals (see <http://djalil.chafai.net/EJP-ECP/>), but also in editing the the accepted papers in almost no time at all.

This is more or less three jobs under one the title of “Managing Editor”, and, as the stature of and thus demand on EJP/ECP continues to rise, we cannot expect this model to be sustainable over the long haul. I’d like to take this chance to repeat M. Ledoux’s suggestion that the IMS and BS jointly appoint a professional copy editor (i.e., not an academic) to handle accepted papers (perhaps in coordination with other journals).

Some Statistics

Again, a complete view of the statistics of both journals can be found at:

<http://djalil.chafai.net/EJP-ECP/>.

From January 1, 2015 to June 2015 the picture for EJP is:

Submitted: 170

Published: 3 (possibly after 2015)

Still in process: 73

Rejected: 94

Days to rejection (for 94 papers): av:19.0, sd:32.7, Q25:1.0, Q50:4.0, Q75:21.0, Q100:142.0

Days to first decision (for 112 papers): av:34.0, sd:48.2, Q25:1.0, Q50:7.5, Q75:60.3, Q100:176.0

Compare to the 2014 calendar year:

Submitted: 378

Published: 92 (possibly after 2014)

Still in process: 53

Rejected: 233

Days to rejection (for 233 papers): av:65.7, sd:86.7, Q25:1.0, Q50:12.0, Q75:119.0, Q100:403.0

Days to first decision (for 367 papers): av:102.8, sd:96.0, Q25:4.0, Q50:94.0, Q75:176.0, Q100:403.0

Conclusions

The first half of 2015 indicates continued success/health of EJP, with a high number of submissions more or less on par with 2014.

The large number of submissions allows the Editorial Board to apply strict selection criteria. Still, the Mathematical Citation Quotient (MCQ) of EJP is not as high as one might hope (see <http://djalil.chafai.net/EJP-ECP/#annual-report>). The Editorial Board

continues to work toward levels comparable to the top journals in Probability Theory, such as AOP or PTRF. The obvious hook being that publishing in EJP/ECP has many advantages: excellent scientific level, fast publication, totally free access, nice hyperlinked PDF file, and so on.

Brian Rider
Chief Editor, EJP
June 30, 2015

Annual Report Electronic Journal of Statistics

George Michailidis
June 30, 2015

This report cover the following periods:

(i) January 1 - December 31, 2014 and (ii) January 1 - June 30, 2015

Period: Jan 1 - Dec 31, 2014

Submitted: 401

Published: 81 (appeared in 2104 and 2015)

Still in process: 65 (Awaiting revision: 59, awaiting decision: 6)

Rejected: 255 (by the editor: 150, by the AEs/referees: 63, with encouragement for resubmission: 42)

Hence, the acceptance rate in 2014 was $81/(81+255)=24\%$, similar to the rate at the same point in time in 2014. However, there is still a number of papers under revision that many of them will eventually get accepted

Days to rejection (for 255 papers) are: 42.9, Q1: 2, median: 11, Q3: 78

Days to first decision (for 395 papers) are: 70.5, Q1: 3, median: 46.5, Q3: 119

Remark: The statistics for the days to rejection are comparable to those in 2013 - ave: 41.9, Q1: 2.5, median: 10, Q3: 80- while those to first decision are somewhat lower - ave: 81.5, Q1: 8, median 69, Q3: 119.

Period: Jan 1 - Jun 30, 2015

Submitted: 198

Accepted/Published: 17

Still in process: 66 (Awaiting revision: 19, awaiting decision: 47)

Rejected: 115 (by the editor: 81, by the AEs/referees: 30, with encouragement for resubmission: 4)

Days to rejection (for 115 papers): ave: 15.5, Q1: 0, median: 3, Q3: 11 Days to first decision (for 134 papers): ave: 24.5, Q1: 0.75, median: 4, Q3: 28.5

Remark: the corresponding number for the Jan 1 - May 31, 2014 period were:
Rejection - ave: 14.3, Q1: 0.75, median: 3, Q3: 23
First decision: ave: 27.1, Q1: 1, median 4.5, Q3: 46

Finally, the number of published pages by calendar year since 2010 are:

Remark: Starting in 2014, the annual volume was split in two issues.

Year	# of Pages
2010	1546
2011	2030
2012	2626
2013	3169
2014	3192
2015	1448

Special issue and invited discussion papers

A special issue on “Statistics of Time Warpings and Phase Variations” organized by Steve Mar-ron, based on work presented at the NSF sponsored Mathematical Biosciences Institute appeared in 2014, pages 1697-1939

An invited discussion paper by Laber, Lizotte, Qian, Pelham and Murphy titled “Dynamic treatment regimes: technical challenges and applications” and discussions by Robins-Rotnizsky, Goldberg-Song-Zeng-Kosorok, Hsu-Small and Banerjee, appeared in 2014, pages 1225-1321

An invited discussion paper by McMurry and Polits titled “High-dimensional autocovariance matrices and optimal linear prediction” and discussions by Wu, Hyndman, Gel-Palma, Chen, ap-peared in 2015, pages 753-822

There is an other special issue finalized (expected to appear in Sept 2015), based on the February 2014 SAMSI workshop on Statistical Inference in Sparse High-Dimensional Models, co-edited by Flori Bunea and Marloes Maathuis. Contributed papers are by: Gao-Zhou, Olhede-Wolfe, Barraud, Hao-Zhang, Zhao-Xu-Li-Liu, Mitra-Zhang, Belloni-Rosenbaum-Tsybakov, She

Finally, there have been discussions with Subhashis Ghoshal to organize a special issue based on selected papers presented at the recent 10th Conference on Bayesian Nonparametrics that recently took place at the NCSU campus.

The following invited discussion papers are being finalized and appear in the next months.

- “Estimating Structured High-Dimensional Covariance and Precision Matrices: Optimal Rates and Adaptive Estimation” by Cai-Ren-Zhou, with discussions by Zou, Tsybakov, Paul-Wang and Balasubramanian-Yuan.
- “Hypotheses Testing by Convex Optimization” by Goldenschluger-Juditsky-Nemirovski, with discussions by Birge, Rigollet, Dalayan, Agrawal, Munk, Comte-Duval-Genon-Catalot.
- “Marginal Integration for Nonparametric Causal Inference” with discussions by Spirtes, Shoj-jaie, Drton, Scholkopf and possibly Robbins.

Finally, Jon Wellner had agreed to contribute a discussion paper on shape restricted inference, while Art Owen has expressed interest for contributing a paper on Quasi-Monte-Carlo methods. There have been discussion with Edo Airoldi on a review paper on networks.

Journal of Computational and Graphical Statistics

Editor's Report

Thomas C. M. Lee, Eric Sampson & Janet Wallace

July 30, 2014

1 Overview

The Journal of Computational and Graphical Statistics (JCGS) is entering its 23rd year. Some highlights:

- Thanks to the excellent and tireless work of our Editorial Coordinator Janet Wallace and our Editorial Board, we are able to maintain low *review times* without sacrificing review quality.
- Starting 2014 the JCGS page budget is increased from 1000 pages to 1200 pages, which will help reduce the backlog and give the journal more flexibility in planning issues.
- JCGS continues to rank as a premier Computational Statistics journal and high prestige among Statistics and Probability journals.

2 Submission and Processing of Manuscripts

2.1 Submission Data

The number of new submissions reached an all time high in 2013. The table below presents the number of manuscripts submitted and published since 2004. Additionally, as of June 30, 2014, 126 manuscripts have been submitted. In comparison, 76, 78, 105, 115, 89, 114 and 128 manuscripts were submitted as of June 30 of the years 2007 to 2013 respectively.

Year	2004	2005	2006	2007	2008	2009	2010	2011	2012	2013
Subs	120	176	165	177	189	230	208	204	257	271
Publ	57 (48%)	51 (29%)	47 (28%)	56 (29%)	45 (24%)	55 (24%)	50 (24%)	48 (24%)	49 (19%)	50 (18%)

The “Editor year” begins on July 1 of a given year. The two tables below present a detailed break down of papers submitted during each of these eight years by the different stages of the review process up to first decision. With the increase in submissions, the number of editor rejections has risen, from about 25% of submitted manuscripts to now about 50%. A major reason behind this change is to reduce the burden on the voluntary time of our editorial board and external referees

(and in the hope of exchanging for more timely and quality reviews!). As a sidenote, about 40% of those papers that survived the editor’s screening were volunteered by at least one AE.

<i>Manuscript submissions</i>								
“Editor year” starting 7/1	2006 – 2007		2007 – 2008		2008 – 2009		2009 – 2010	
Rejected by Editor	36	23%	40	22%	73	34%	118	49%
Rejected by AE	18	12%	18	10%	29	14%	13	5%
Rejected by Review	39	25%	48	27%	51	24%	25	10%
Revision request	0	0%	0	0%	1	0%	0	0%
Accepted (Tentative/Final)	50	32%	50	28%	45	21%	60	25%
Under First Review	0	0%	0	0%	0	0%	0	0%
Withdrawn Before Decision	5	3%	14	8%	10	5%	7	7%
Withdrawn After Decision	8	5%	9	4%	4	2%	17	5%
TOTAL	156		179		216		240	

<i>Manuscript submissions</i>								
“Editor year” starting 7/1	2010 – 2011		2011 – 2012		2012 – 2013		2013 – 2014	
Rejected by Editor	92	51%	116	53%	120	48%	142	54%
Rejected by AE	15	9%	7	3%	8	3%	19	7%
Rejected by Review	22	12%	10	5%	46	18%	21	8%
Revision request	4	2%	21	10%	20	8%	28	11%
Accepted (Tentative/Final)	37	20%	26	12%	53	21%	20	8%
Under First Review	0	0%	33	15%	0	0%	26	10%
Withdrawn Before Decision	9	5%	3	1%	3	1%	4	2%
Withdrawn After Decision	2	1%	1	0%	0	0%	0	0%
TOTAL	181		217		256		260	

2.2 Manuscript Processing Time

The two tables below present a breakdown of times under various stages of the review process for the past five years, July 1, 2009 to June 30, 2014. JCGS switched to the ScholarOne manuscript submission system in mid-October 2011. Unfortunately, ScholarOne does not provide easily manipulated raw review time data, focusing on end-user summary graphics. Therefore, the tables below first present our typical review time summaries from AllenTrack submission data and then merely a time to first decision summary from ScholarOne submissions. The fast turnaround from Editor rejections has lead to a median time to first editorial decision of about 4 days. Due to efforts to reduce the longer delays in assigning reviewers and receive reviewer reports, 75% of papers receive a first review in about three months.

<i>AllenTrack</i>	Submitted July 2009 – October 2011						
prctile/max/sample size:	5	25	50	75	95	max	<i>n</i>
MS received to AE assigned	2	5	8	12	20	27	209
MS received to ref 1 found	7	12	21	32	60	140	170
MS received to ref 2 found	9	16	28	49	91	196	155
Last review to AE report	1	3	10	36	92	320	167
AE report to Editor letter	0	1	2	4	6	10	202
<i>MS received to Editor letter</i>	0	2	5	97	183	345	461

<i>ScholarOne</i>	Submitted October 2011 – June 2012						
prctile/max/sample size:	5	25	50	75	95	max	<i>n</i>
<i>MS received to Editor letter</i>	0	2	5	71	117	186	140

	Submitted July 2012 – June 2014						
prctile/max/sample size:	5	25	50	75	95	max	<i>n</i>
<i>MS received to Editor letter</i>	0	1	4	93	160	444 [†]	518 ^{††}

[†] a sequence of unfortunate events led to the long review time for this paper (the next longest one is 210 days)

^{††} additional 30 manuscripts awaiting first review/decision

2.3 Acceptance Rate and Backlog

With the increased page budget, JCGS will be able to publish 58 to 60 papers per year. Assuming there is no decrease in the number of future submissions, our target acceptance rate should be in the 21% to 22% range. Given the relatively large backlog (roughly a 15-month wait for an accepted paper to appear), it would be a good idea to reduce the acceptance rate to say around 18%.

2.4 Printed and Online Issues

The next table presents the number of pages in the 2006 – 2013 printed volumes broken down by item types appearing in each issue. The number of pages per volume is limited, allowing for on average 50 articles published per year (i.e., per volume). Continuing effort is being made to limit the length of submissions and revisions, leading to a reduction in the number of pages per article published. The acceptance rate, as noted in the previous tables, has dropped to prevent a rise in the backlog of articles in-queue for publication.

Since the 2009 volume, all articles contain supplemental materials, be it appendices of mathematical developments and proofs, additional technical or algorithmic details of proposed methods,

data sets and code for replicating simulations and illustrations in a paper, and/or color version of gray-scale graphics in-print. We presented our first online movie/animation as part of supplemental materials to an article in the March 2011 issue and have had a few such visualizations appear since. We continue to encourage authors to submit interactive visualizations and demonstrations as well as Sweave/Rweave interfaces.

Color graphics have become popular in manuscript submissions. We are encouraging authors to make all effort to present graphics in gray-scale, and authors are being extremely cooperative. All papers may present black-and-white graphics in-print with color versions on-line as well. However, gray-scale figure presentations will be less of an option as authors become better versed in color imagery particularly for high-dimensional data mining applications. The move to Taylor & Francis may lessen the burden with greater flexibility in color printing and we have a mechanism for authors to cover in-print color expenses themselves. Nonetheless, we may continue to pursue an online-only dissemination option.

Lastly, recall that the JCGS page budget has been permanently increased from 1000 pages to 1200 pages, which will help reduce the backlog and give the journal more flexibility in planning issues.

		2006	2007	2008	2009	2010	2011	2012	2013
Numbered Pages									
Articles		942	967	987	1017	1028	1015	968	977
Number of Articles		47	44	49	53	54	54	49	50
Pages per Article		20.04	21.98	20.14	19.19	19.07	18.80	19.75	19.5
Anniversary Features		0	0	0	0	0	177	0	0
J of Statistical Software		16	28	25	17	10	11	9	8
Corrections		1	1	1	0	0	2	2	0
Editorials		0	0	1	0	2	2	1	4
Index		4	3	4	3	5	5	0	0
Editorial Collaborators		5	4	4	4	3	3	3	4
Advertisements		1	2	1	0	0	0	0	0
Total Numbered Pages		969	1005	1023	1041	1051	1038	983	993
Unnumbered Pages									
Table of Contents		4	4	4	4	4	4	4	4
Editorial Board		4	4	4	4	4	4	4	4
Information for Authors		16	16	16	12	0	0	0	4
Advertisements		6	5	4	3	8	5	10	6
USPS		2	2	1	1	1	1	1	1
Total Unnumbered Pages		32	31	29	24	17	14	19	19
Total Pages		1001	1032	1065	1065	1068	1052	1002	1012

2.5 Manuscript topics

The following table presents the number of manuscripts submitted from July 1, 2009 to June 30, 2014 by topic. The categories were defined by Rich (past editor) and, of course, most papers cover more than one primary category. The table is meant merely as an approximate distribution of topic areas for point of interest as well as a rough study of topic trends for the coming years.

Topic	2009-2010	2010-2011	2011-2012	2012-2013	2013-2014
	# manuscripts	# manuscripts	# manuscripts	# manuscripts	# manuscripts
Bayesian computing	58 (25%)	43 (25%)	50 (23%)	54 (21%)	68 (26%)
Machine learning	54 (23%)	44 (26%)	50 (23%)	49 (19%)	58 (22%)
Regression computing	26 (11%)	9 (5%)	18 (8%)	25 (10%)	10 (4%)
EM and variants	13 (6%)	9 (5%)	8 (4%)	4 (2%)	7 (3%)
Smoothing	26 (11%)	17 (10%)	17 (8%)	39 (15%)	39 (15%)
Graphics	20 (8%)	14 (8%)	19 (9%)	15 (6%)	17 (6%)
Other	39 (16%)	36 (21%)	51 (24%)	68 (27%)	67 (25%)
Total	236 [†]	172 [*]	213 [‡]	254 ^{**}	266

[†] Four withdrawn papers not included.

^{*} Nine withdrawn papers not included.

[‡] Four withdrawn papers not included.

^{**} Two withdrawn papers not included.

3 Outreach and Improvements

In continuing efforts to raise the profile of JCGS:

- The proposal organized by Thomas won a competition for an invited session at JSM 2014 entitled “JCGS Highlights: Computational Innovations for Analyzing Big Data”:
 - *Functional Data Analysis of Tree Data Objects* by J. S. Marron, University of North Carolina
 - *Variable Selection Diagnostics Measures for High-Dimensional Regression* by Yuhong Yang, University of Minnesota
 - *Pathwise Calibrated Active Shooting Algorithm with Application to Semiparametric Graph Estimation* by Han Liu, Princeton University

- **Online access:** ASA, IMS, and Interface members get free online access to JCGS as part of their membership. We also are still giving free online access to an article from each issue, both to entice readers to the online version of the journal, and peruse the capabilities therein, as well as highlight hot-topic journal pieces.

4 Editorial Board

We have a new Associate Editor joining the board this year; please welcome Jie Peng (University of California, Davis).

A dinner gossip: since Thomas started his term, five Associate Editors have assumed the role of editor/co-editor for other journals. They are:

- Piotr Fryzlewicz (*JRSSB*)
- Mark Girolami (*Statistics & Computing*)
- Hsin-Cheng Huang (*Statistica Sinica*)
- George Michailidis (*Electronic Journal of Statistics*)
- David van Dyk (*JASA Review*)

5 JCGS in the rankings

The table below compares JCGS citation patterns with other computational statistics journals.

Columns 2 to 5 are tabulated using data collected from *ISI Web of Science* for years 1997 to 2012. These columns report the total number of articles published, the number (%) of articles cited at least twenty times for each journal, the average number of cites per article and the *h*-index, defined as the number of papers *h* that have *h* or more citations.

Columns 6 to 11 report the following:

impact factor being cites in 2012 to items published in the last two years,

five-year impact factor being the impact factor but looking back five years,

half-life being the median age of articles cited in 2012,

eigen score being the number of times articles from journal in last five years cited in 2012, weighted by journal quality (in terms of citation rank, no self-citations counted),

immediacy index being the average number of times articles published in 2012 are cited in indexed journals during 2012,

influence score being a normalization of the eigen score divided by the number of articles (mean of 1.0, akin to the five-year journal impact factor).

Out of 117 statistics journals surveyed in 2012, JCGS ranks 37th in impact factor, 30th in 5-year impact factor, 28th in the eigen score, 52nd in the immediacy index, and 26th in influence score. Corresponding rankings from 2011 were 46th, 23rd, 27th, 8th and 22nd respectively.

The last column reports the latest (2012) SCImago Journal Ranks (SJRs) of the journals in the area Statistics and Probability. Out of 122 journals ranked, JCGS ranks 15th. The ranking is done with the algorithm Google PageRank™.

	articles	≥ 20 cites	avg # cites	h	IF	5-yr IF	half-life	eigen	immediacy	influence	SJR
<i>JCGS</i>	793	126 (15.8%)	13.86	43	1.269	1.661	>10	0.00709	0.184	1.591	15
Comm-S/C	1438	26 (1.8%)	2.64	22	0.295	0.515	9.1	0.00359	0.065	0.331	81
CompStat	617	24 (3.8%)	3.89	21	0.482	0.771	6.5	0.00212	0.023	0.589	96
CSDA	3361	229 (6.8%)	6.67	47	1.304	1.449	5.8	0.02601	0.415	0.918	27
JSCS	1281	27 (2.1%)	3.46	23	0.629	0.581	9.7	0.00324	0.089	0.378	64
JSS ^a	448	38 (%)	9.87	27	4.910	5.907	5.0	0.01744	0.753	3.314	not ranked
S&C	624	67 (10.7%)	16.21	34	1.977	2.663	>10	0.00686	0.382	2.026	16

^aJSS indexed only since 2005.

Report on Probability Surveys

Ben Hambly - Editor-in-Chief since 1st January 2015

Probability Surveys has a valuable role to play for the probability community providing well written articles on topics that are in need of consolidation or summary at points in their development. Probability Surveys publishes surveys articles covering any aspects of probability theory, its applications and its interactions with related fields. All papers are refereed. Any survey format is welcome (short and long, without proofs or with some proofs) as long as the article conveys a substantial amount of information about an interesting subject in an accessible way and with respect for the existing knowledge and literature in the area.

The journal is still in the process of finding its natural steady state in terms of the flow of survey articles it receives.

Over the last 5 years the journal has published

Volume 7 (2010) 6 Surveys and 208 pages

Volume 8 (2011) 8 Surveys and 495 pages

Volume 9 (2012) 8 Surveys and 479 pages

Volume 10 (2013) 3 Surveys and 93 pages

Volume 11 (2014) 9 Surveys and 440 pages.

There are currently 15 Surveys at various stages in the editorial process.

An important editorial activity is spreading the word and encouraging potential authors which the editorial board pursues through personal contact and public advertisement. Advertisements have been placed in the IMS Bulletin and in Bernoulli News in the past. Lecturers for summer school courses are encouraged to submit accounts of their courses.

It seems likely that the existence of Probability Surveys is instrumental in encouraging researchers in probability and related fields to write survey articles and I would encourage any readers of this report to consider submitting a survey to Probability Surveys!

Relations with vtex are very cordial and effective.

SS 2015

Statistics Surveys, Annual Report to the Institute of Mathematical Statistics
July 03, 2015

Prepared by: Donald Richards, Co-Editor representing the Institute of Mathematical
Statistics (IMS)

Statistics Surveys is sponsored by the American Statistical Association, the Bernoulli Society, the Institute of Mathematical Statistics, and by the Statistical Society of Canada, and the editorial board contains one representative of each of these four societies and a coordinating editor. The board consists of: Sara van de Geer (Bernoulli Society), Ranjan Maitra (American Statistical Association), Richard A. Lockhart (Statistical Society of Canada), Wendy L. Martinez (Coordinating Editor), and Donald Richards (Institute of Mathematical Statistics).

SUBMISSIONS

During the period January 01, 2014 - June 24, 2015, thirty (30) manuscripts were submitted to the journal. This number is small when compared with other IMS journals, however this is to be expected given that the survey nature of viable papers requires such papers to be lengthier and to have been written by a smaller, select group of authors with substantial experience and strong credentials in their chosen subject areas. The editorial board have also taken informal steps to increase the number of submissions, and there is a willingness amongst the board to encourage authors of potentially viable articles to revise and resubmit manuscripts.

The current status of the 30 submitted manuscripts is as follows:

Accepted: 2
Rejected: 15
Minor revisions requested: 3
Major revisions requested: 3
Rejected with resubmission encouraged: 5
Status to be determined: 2

Total	30
-------	----

In a few instances, submitted manuscripts of a non-survey nature were rejected because authors had confused the journal name, "Statistics Surveys," with that of other journals specializing in survey methodology. This issue prompted a brief discussion amongst the four co-editors to discuss the idea of approaching our respective societies to raise the issue of a possible change-of-name, but the consensus view is that no such name change is necessary and that it is the duty of potential authors to make themselves fully aware of the journal guidelines, subject areas, and the general nature of published articles, all of which are available at <http://imstat.org/ss/>.

THE BOARD OF ASSOCIATE EDITORS

The current editorial board (38) consists of: Elja Arjas, Martin Lindquist, Daniel Commenges, Enno Mammen, Guido Consonni, John Marden, Noel Cressie, Geoff McLachlan, Rainer Dahlhaus, Hannu Oja, Anirban DasGupta, Dominique Picard, Sujay Datta, Louis-Paul Rivest, Mathisca De Gunst, Qi-Man Shao, Jianqing Fan, Xiaotong Shen, Edward I. George, Simon Tavaré, Subhashis Ghosal, Stephen B. Vardeman, Nils L. Hjort, Grace Wahba, John D. Kalbfleisch, Yuhong Yang, Claudia Klüppelberg, Donglin Zeng, Vladimir I. Koltchinskii, Cun-Hui Zhang, Jerald F. Lawless, and Jun Zhu. The editors are very grateful for their continued assistance.

EJMS

The EJMS is working well. Geri Mattson and Elyse Gustafson are always quick to provide their advice and help when called upon.

Committee on Asia Pacific Rim Meeting Report

The 4th IMS Asia Pacific Rim meeting will take place on the campus of the Chinese University of Hong Kong, Hong Kong, China, during the period of 27—30 June 2016. The previous three meetings were held in Seoul, Korea in 2009, Tuskuba, Japan in 2012, and Taipei, Taiwan in 2014. For this fourth meeting, there will be two plenary sessions as in the past meetings, sixteen distinguished lecture sessions for which the format is similar to that of the IMS Medallion Lectures, fifty invited paper sessions, some number of topic-contributed and contributed sessions, and one large poster session. The size of the fourth meeting is expected to be similar to that of the third meeting. In February 2015 the committee chose two plenary speakers by vote. They are Persi Diaconis and Iain Johnstone, both from Stanford University, and both of them have confirmed to deliver the plenary lectures. All of the invited sessions will be organized by 30 September 2015, and the complete scientific program will be organized by 31 December 2015. The local organizing committee is led by Qiman Shao from the Chinese University of Hong Kong. The conference website is <http://ims-aprm2016.sta.cuhk.edu.hk/>.

Reported by Ming-Yen Cheng and Xuming He.

IMS Committee on Fellows 2015 Annual Report

The 2015 IMS Fellows Committee has twelve members: Yali Amit, Rodrigo Banuelos, Anton Bovier, Peter Buhlmann, Zhen-Qing Chen, Amir Dembo, David Dunson, Mark Low, Kerrie Mengersen, Marta Sanz-Sole, Xiaotong Shen, and myself as Chair. Thanks to all, but especially to Yali Amit, Rodrigo Banuelos, and Zhen-Qing Chen as we complete our terms on this committee.

Fifty members of IMS were nominated for Fellow. Seventeen (31%) were elected: Axel Munk, Benjamin M. Hambly, Davar Khoshnevisan, Douglas Nychka, Gesine Reinert, Hui Zou, Igor Prunster, Ji Zhu, Judith Rousseau, Laurent Younes, Ming Yuan, Nouredine el Karoui, Peter Guttorp, Sudipto Banerjee, Sylvia Richardson, Tong Zhang, and Yaozhong Hu.

The committee had two introductory conferences calls to accommodate their geographical diversity and voted to conduct remaining committee business strictly by email. Two rounds of voting were held at which point all agreed not to change their positions. Discussion was very limited, and strongly discouraged by some committee members.

IMS Committee on New Researchers Annual Report, 2014-2015

The IMS Committee on new researchers has been active in two main fronts: (i) organizing the 2015 New Researchers Conference (NRC) and (ii) setting up the new ad-hoc committee on junior researchers (j-IMS). Each of these activities are briefly discussed below. In addition to the above activities, a subcommittee -- Jian Ding (chair), Johanna G. Nešlehová, Karl Rohe, -- was also formed to select a tutorial speaker for the 2016 Seminar on Stochastic Processes (SSP). The subcommittee has completed this task.

Organizing the 2015 New Researchers Conference (NRC)

To organize the NRC, the co-chairs of the organizing committee have been able to secure \$43,000 funding from NSF (\$23,000), NSA (\$16,000) and Google (\$4,000). An application is also pending for funding from NIH: the application has received a good score, and is awaiting council review.

On the organizational front, the logistics for venue, lodging and food have been finalized. Participants have been selected. 55 participants have been selected from 85 applicants based on review of applications by the Organizing Committee. Given the goals of the NRC, selected participants are primarily (~90%) junior faculty, or will start a faculty position in fall 2015. The 85 applicants came from 61 different institutions, and 68 were domestic applicants. Of domestic applicants, 24 (35%) come from the northeast, 23 (34%) come from the south, 14 (21%) come from the midwest, and 7 (10%) come from the west. Race/gender information will be collected (voluntarily) from the participants as part of the registration process.

The following senior faculty will present plenary talks or participate at one of discussion panels:

1) Speakers:

Erwin Bolthausen (IMS President)
Persi Diaconis (Stanford)
Jianqing Fan (Princeton)
Patrick Heagerty (UW)
Xihong Lin (Harvard)
Adrian Raftery (UW)
Han Liu (Tweedie Award winner)

2) Panelists:

Funding:

Peter J. Kozel (NIH-NCI)
Nandini Kannan (NSF)
Michelle Dunn (NIH-BD2K)

Publication:

Nick Jewell (Journal of the American Statistical Association: Editor)
George Michailidis (Electronic Journal of Statistics: Editor)
Jianqi Fan (Annals of Statistics: Past Editor)
Erwin Bolthausen (IMS President)

Teaching/Advising/Mentoring:

Rob Tibshirani (Stanford)

Lianne Sheppard (UW)

Jon Wellner (UW)

Bin Yu (Berkeley)

Data Science:

Bin Yu (Berkeley)

Rob Tibshirani (Stanford)

Michelle Dunn (NIH)

Tim Hesterberg (Google)

Alan Carr (RTI International)

The new IMS ad-hoc committee on junior researchers (j-IMS)

With the approval of the IMS presidents, the new IMS committee on junior researchers was formed in 2015, based on a proposal prepared by a group of junior researchers after 2014 IMS-NRC. The committee currently consists of Sharmodeep Bhattacharyya, Jian Ding, Betsy Ogburn, Alex Volfovsky, with Edo Airoldi and Ali Shojaie serving as co-chairs.

The new committee aims to foster interactions among junior researchers, across all areas of probability and statistics. To this end, a *social mixer* has been organized at the JSM 2015, to bring together participants in the past three NRC to discuss further expansion of group members, and additional actions by the committee. Efforts have also been made to organize invited sessions at various national and international conferences focusing on work of junior researchers. As a start, two invited sessions have been organized for ENAR 2016. We plan to discuss strategies to expand this effort at the social mixer, and will seek proposals from junior researchers for JSM 2016.